

# SONY

make.believe

---

## Working Instructions

- mechanical -



*Xperia™ sola*

*MT27i*

## CONTENTS

<b>1</b>	<b>Exterior Views.....</b>	<b>4</b>
1.1	MT27i.....	4
<b>2</b>	<b>Tools .....</b>	<b>5</b>
<b>3</b>	<b>Disassembly.....</b>	<b>6</b>
3.1	Cover Battery.....	6
3.2	Foil Battery Flex Lid.....	6
3.3	Lid Battery Flex .....	7
3.4	Cap Bottom.....	7
3.5	Silicone Volume/Camera .....	8
3.6	Inner Frame .....	8
3.7	Main PBA .....	10
3.8	Cover Front & LCD support Assembly .....	12
<b>4</b>	<b>Replacement .....</b>	<b>14</b>
4.1	Cover Battery.....	14
4.2	Foil Battery Flex Lid.....	14
4.3	Lid Battery Flex .....	14
4.4	Cap Bottom.....	14
4.5	Silicone Volume/Camera .....	15
4.6	Inner Frame .....	15
4.7	Cover Front.....	15
4.8	LCD support .....	15
4.9	Adhesive 10,8 x 3,4 .....	16
4.10	Audio Jack.....	18
4.11	Battery.....	19
4.12	Cushion BtB Support.....	21
4.13	Cushion Conductive Grounding .....	22
4.14	Display .....	23
4.15	Earspeaker & Adhesive 11,9 x 5,9 Earspeaker.....	25
4.16	Foil Battery Protection.....	27
4.17	FPC AV.....	29
4.18	FPC LED/Vibr/Speaker .....	31
4.19	Gasket 23 x 13 Speakerbox .....	33
4.20	Gasket 2nd Mic Circular .....	34
4.21	Gasket 2nd Mic Oval .....	35
4.22	Gasket Conductive.....	36
4.23	Gasket Lightguide LED.....	37
4.24	Gasket Main Mic Rectangular.....	38
4.25	Gasket Mic Circular.....	39
4.26	Label MicroSD .....	40

4.27	Label Mobile Phone.....	41
4.28	Label SIM .....	43
4.29	Main Camera.....	44
4.30	Plug RF Connector.....	46
4.31	Silicone On/Off .....	47
4.32	Speaker & Adhesive 14,6 x 10,6 Loudspeaker .....	48
4.33	Tape Conductive .....	50
4.34	Vibrator .....	52
4.35	Water Indicator 3 x 3 .....	53
4.36	Board Swap - Replacement .....	54
4.37	Board Swap – Change Label .....	54
4.38	Board Swap – Customize of Software .....	54
5	Reassembly.....	55
5.1	Cover Front & LCD support Assembly .....	55
5.2	Main PBA .....	58
5.3	Inner Frame .....	60
5.4	Silicone Volume/Camera .....	61
5.5	Cap Bottom.....	62
5.6	Lid Battery Flex .....	63
5.7	Foil Battery Flex Lid .....	64
5.8	Cover Battery.....	64
6	Revision History .....	66

**For general information about mechanical repair related issues, refer to  
1220-1333: Generic Repair Manual - mechanical**

## 1 Exterior Views

### 1.1 MT27i



## 2 Tools

### SPECIAL TOOLS

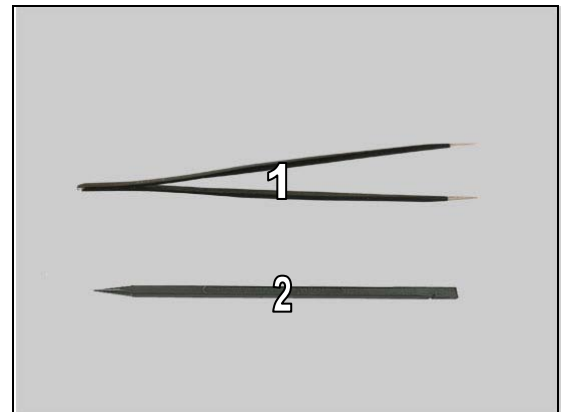
1. Torque Screwdriver
2. Flex Film Assembly Tool
3. Front Opening Tool
4. Bits(JCIS No 0)
5. Bits(T3)
6. Bits(T6)
7. Guitar Pick
8. Battery Connector Removal Tool



**For part no's on the tools above, refer to the 'Tools Catalogue/Matrix'!**

### STANDARD TOOLS

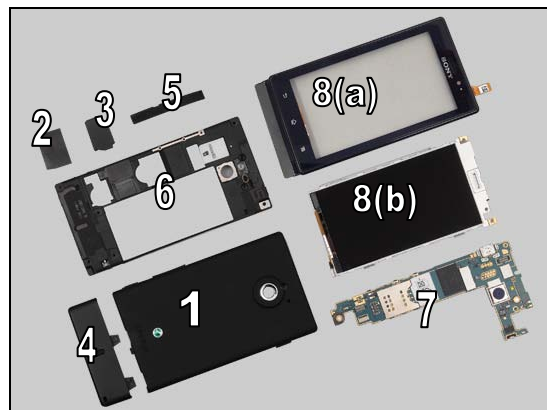
1. Tweezers
2. Nylon Pointer



## 3 Disassembly

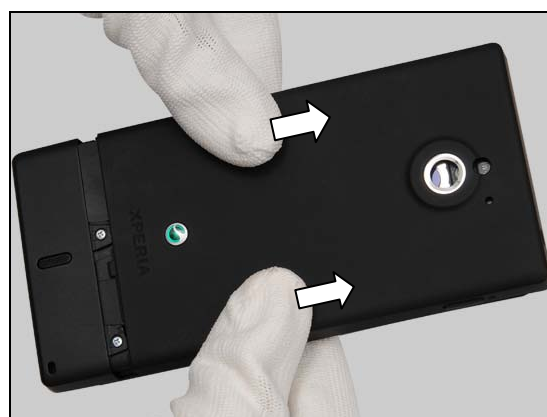
The disassembly is done in the following order:

1. Cover Battery
2. Foil Battery Flex Lid
3. Lid Battery Flex
4. Cap Bottom
5. Silicone Volume/Camera
6. Inner Frame
7. Main PBA
8. Cover Front (a) & LCD support Assembly (b)

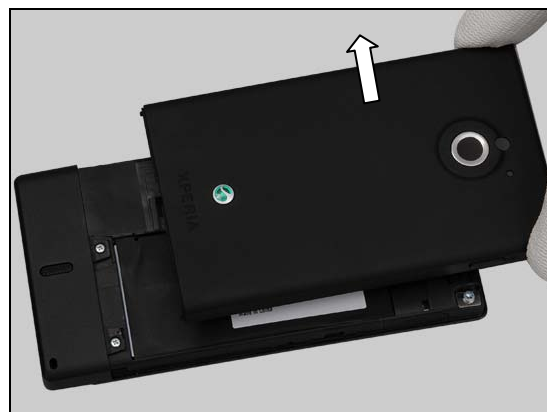


### 3.1 Cover Battery

Push the Cover Battery upwards with your fingers.



Remove the Cover Battery.



### 3.2 Foil Battery Flex Lid

Peel off the Foil Battery Flex Lid.

**Scrap! Not to be reused!**

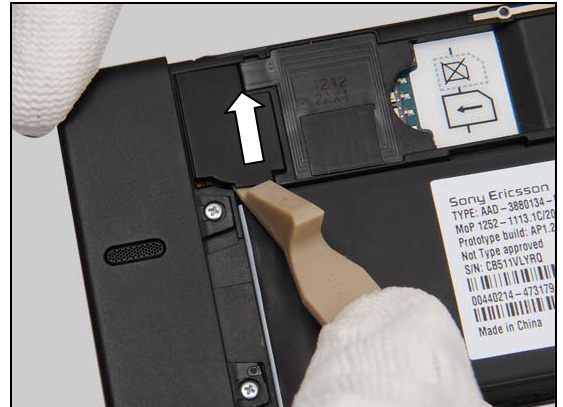
**Note! Early produced units might not contain this foil but it should always be mounted in the unit when it is reassembled.**



## Disassembly

### 3.3 Lid Battery Flex

Insert the Front Opening Tool to release the hook and remove the Lid Battery Flex.



Lift the BtB connector with a Battery Connector Removal Tool straight up.



### 3.4 Cap Bottom

Remove the two screws with a screwdriver with Bits (JCIS No 0).

**Scrap! Not to be reused!**



Insert the Front Opening Tool to release the hook on the Cap Bottom.



## Disassembly

Remove the Cap Bottom.



### 3.5 Silicone Volume/Camera

Peel off the Silicone Volume/Camera with a Flex Film Assembly Tool.

**Scrap! Not to be reused!**



### 3.6 Inner Frame

Remove the two screws with a screwdriver with Bits (T6).

**Scrap! Not to be reused!**



Remove the three screws with a screwdriver with Bits (T3) or Bits (JCIS No 0).

**Scrap! Not to be reused!**

**Note! A cross-headed screw might be used in the incoming units.**



## Disassembly

Insert the Front Opening Tool into the hook at the bottom right side.



Turn the Front Opening tool to release the hook.



Release the hook from middle right side with your fingers.

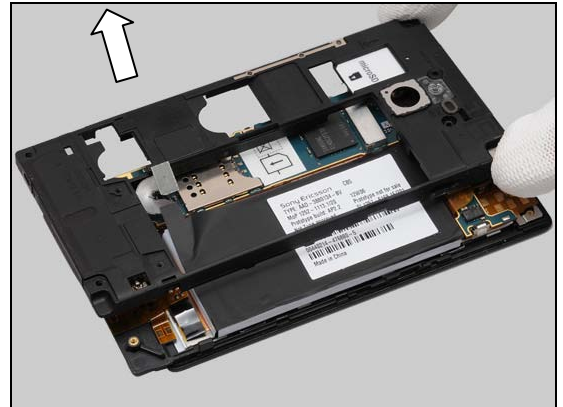


Release the hook from top right side with your fingers.



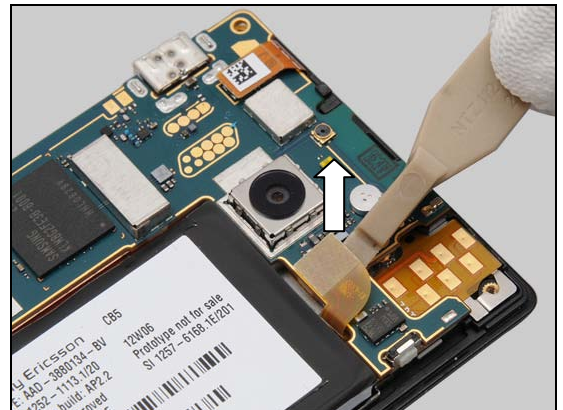
## Disassembly

Remove the Inner Frame.

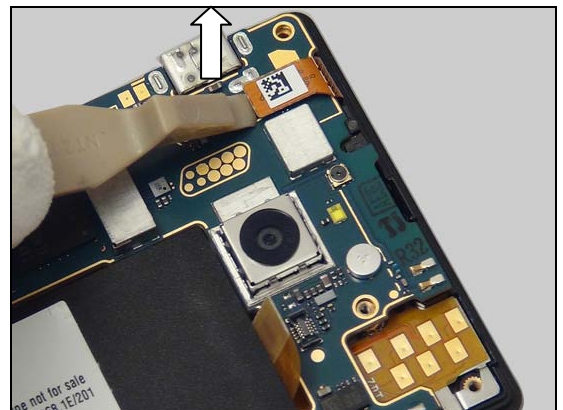


### 3.7 Main PBA

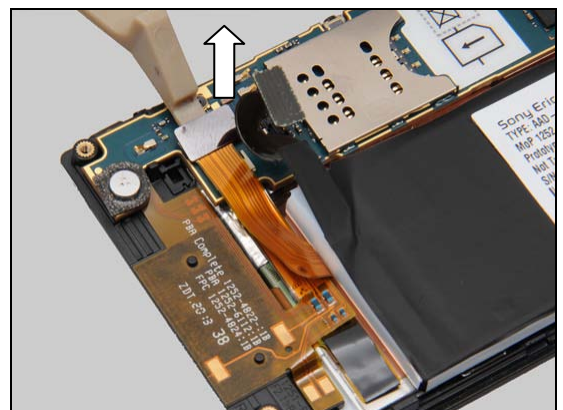
Unsnap the BtB connector of the FPC AV with a Front Opening Tool.



Unsnap the BtB connector of the Cover Front with a Front Opening Tool.

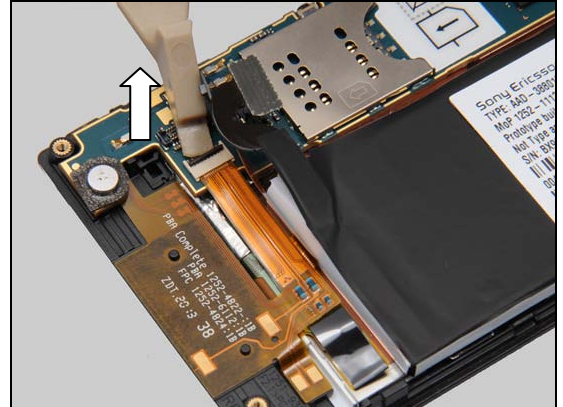


Unsnap the BtB connector of the Display with a Front Opening Tool.

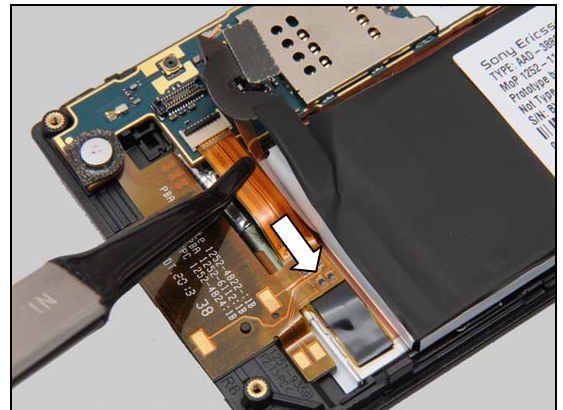


## Disassembly

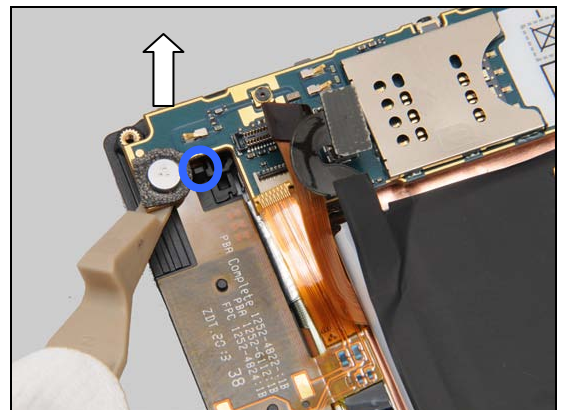
Unlock the ZIF connector of the FPC LED/Vibr/Speaker with a Front Opening Tool.



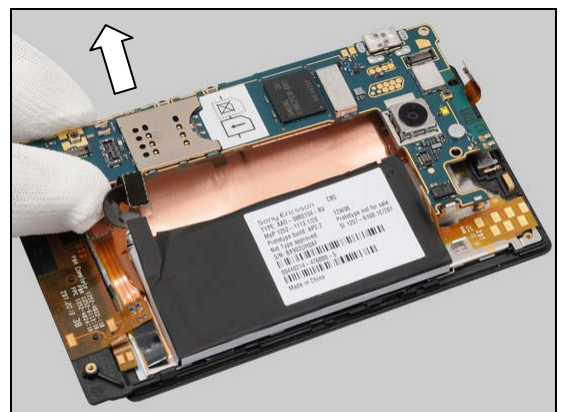
Release the FPC with a Flex Film Assembly Tool.



Insert the Front Opening Tool to release the Main PBA from the hook gently.



Remove the Main PBA.

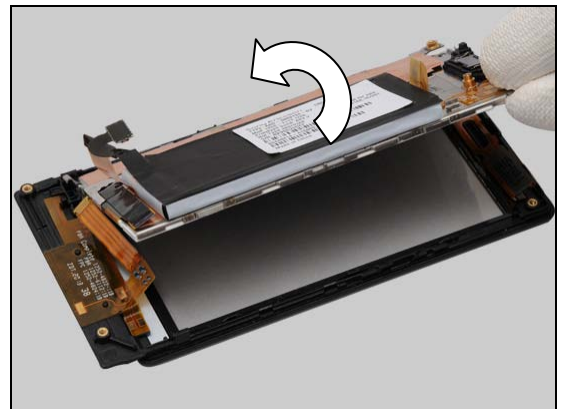


### 3.8 Cover Front & LCD support Assembly

Insert the Front Opening Tool to release the LCD support Assembly from bottom left side.

Insert the Front Opening Tool to release the LCD support Assembly from right side.

Turn over the LCD support Assembly.



## Disassembly

Separate the Cover Front and LCD support Assembly.



## 4 Replacement

### 4.1 Cover Battery

*Follow the 3.1 Disassembly instructions.*

Prepare the new Cover Battery.

*Follow the 5.8 Reassembly instructions.*



### 4.2 Foil Battery Flex Lid

*Follow the 3.1 – 3.2 Disassembly instructions.*

Prepare the new Foil Battery Flex Lid.

*Follow the 5.7 – 5.8 Reassembly instructions.*

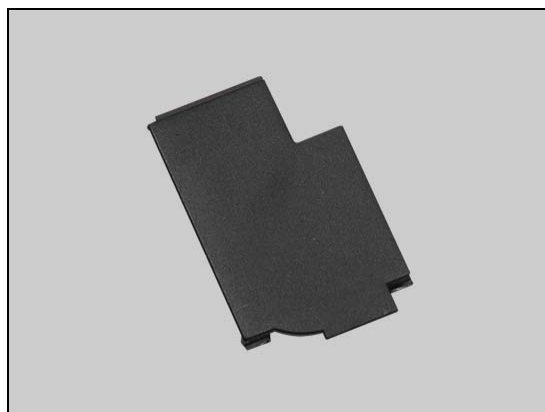


### 4.3 Lid Battery Flex

*Follow the 3.1 – 3.3 Disassembly instructions.*

Prepare the new Lid Battery Flex.

*Follow the 5.6 – 5.8 Reassembly instructions.*



### 4.4 Cap Bottom

*Follow the 3.1 – 3.4 Disassembly instructions.*

Prepare the new Cap Bottom.

*Follow the 5.5 – 5.8 Reassembly instructions.*



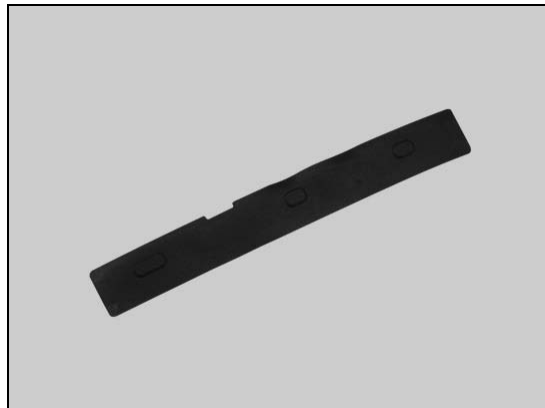
## Replacement

### 4.5 Silicone Volume/Camera

*Follow the 3.1 – 3.5 Disassembly instructions.*

Prepare the new Silicone Volume/Camera.

*Follow the 5.4 – 5.8 Reassembly instructions.*

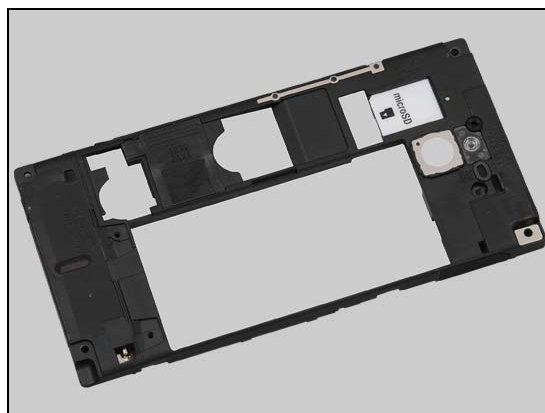


### 4.6 Inner Frame

*Follow the 3.1 – 3.6 Disassembly instructions.*

Prepare the new Inner Frame.

*Follow the 5.3 – 5.8 Reassembly instructions.*



### 4.7 Cover Front

*Follow the 3.1 – 3.8 Disassembly instructions.*

*Follow the 4.23 Removal instructions.*

Prepare the new Cover Front.

*Follow the 4.18 and 4.23 Installation instructions.*

*Follow the 5.1 – 5.8 Reassembly instructions.*

**Touch panel calibration should be performed for all replaced units; 1257-2706 Trouble Shooting Application – mechanical.**



### 4.8 LCD support

*Follow the 3.1 – 3.8 Disassembly instructions.*

*Follow the 4.14 and 4.15 Removal instructions.*

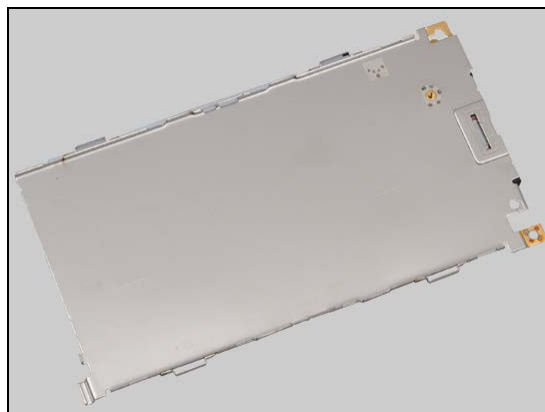
Prepare the new LCD support.

Reuse the Display and the Earspeaker.

*Follow the 4.11, 4.14, 4.15 and 4.17 Installation instructions.*

*Follow the 5.1 – 5.8 Reassembly instructions.*

**Note: The Battery and the LCD support shall always be scrapped together! Due to the damage of both parts when they are separated from each other.**



## Replacement

### 4.9 Adhesive 10,8 x 3,4

*Follow the 3.1 – 3.8 Disassembly instructions.*

*Carry out the Removal as described below.*

*Prepare the new Adhesive 10,8 x 3,4.*

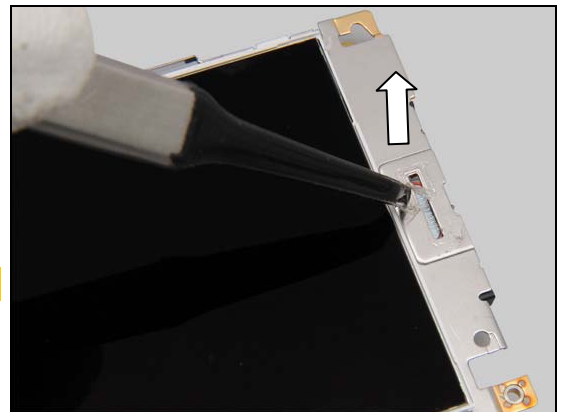
*Carry out the Installation as described below.*

*Follow the 5.1 – 5.8 Reassembly instructions.*

#### REMOVAL

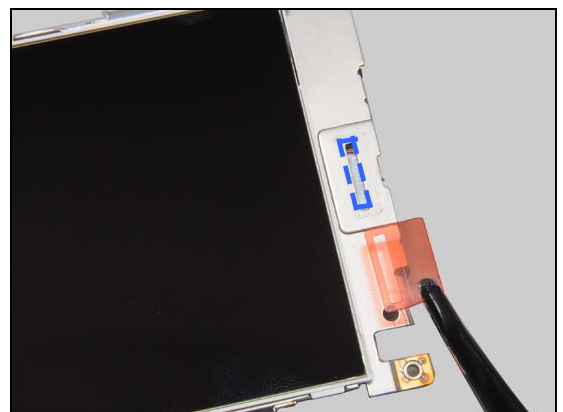
Remove the Adhesive 10,8 x 3,4 with a Flex Film Assembly Tool.

**Scrap! Not to be reused!**

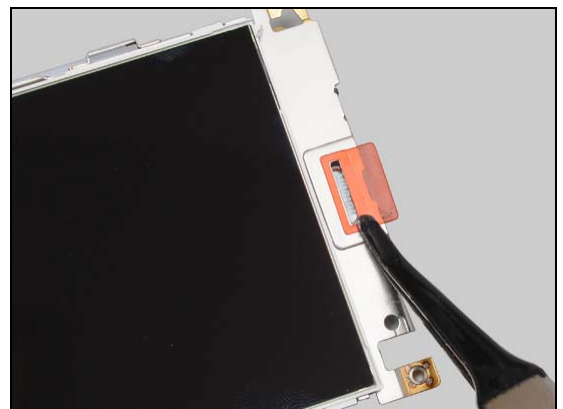


#### INSTALLATION

Mount a new Adhesive 10,8 x 3,4.

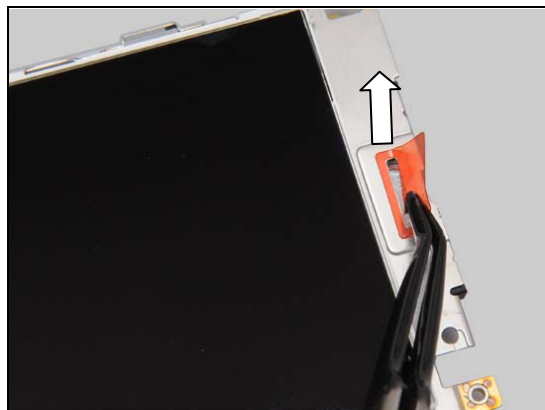


Press to secure its attachment.



## **Replacement: Adhesive 10,8 x 3,4**

Peel off the protection tape.



## Replacement

### 4.10 Audio Jack

*Follow the 3.1 – 3.6 Disassembly instructions.*

*Carry out the Removal as described below.*

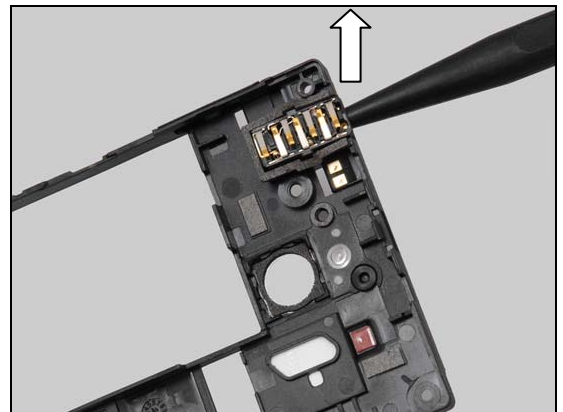
*Prepare the new Audio Jack.*

*Carry out the Installation as described below.*

*Follow the 5.3 – 5.8 Reassembly instructions.*

#### REMOVAL

Remove the Audio Jack with a Nylon Pointer.

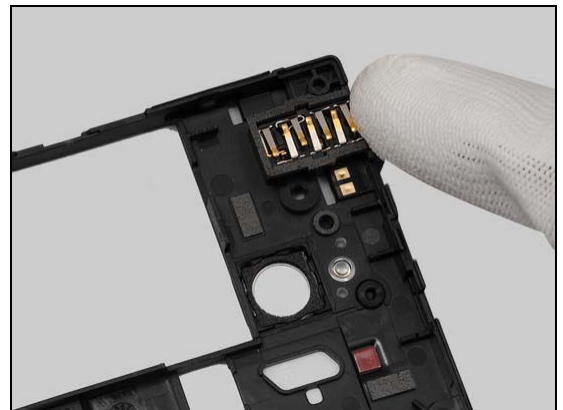


#### INSTALLATION

Place a new Audio Jack in the well.



Press to secure its attachment without damaging the pins.



## Replacement

### 4.11 Battery

*Follow the 3.1 – 3.8 Disassembly instructions.*

*Follow the 4.14, 4.15 and 4.16 Removal instructions.*

*Carry out the Removal as described below.*

Prepare the new Battery.

Reuse the Display and the Earspeaker.

*Carry out the Installation as described below.*

*Follow the 4.14, 4.15 and 4.16 Installation instructions.*

*Follow the 5.1 – 5.8 Reassembly instructions.*

#### REMOVAL

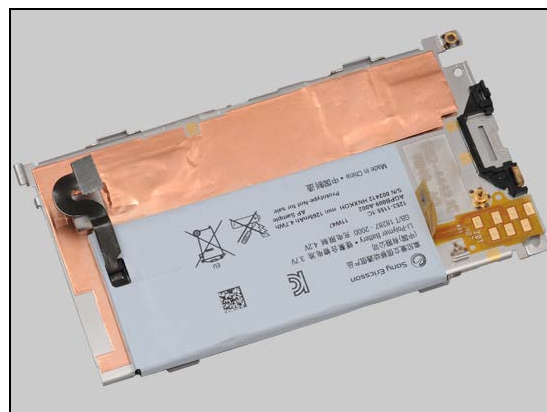
The Battery should be scrapped together with the LCD support. The LCD support will be damaged when it is separated from Battery.

#### INSTALLATION

**Take a new LCD support, never reuse a LCD support that have been separated from the Battery.**

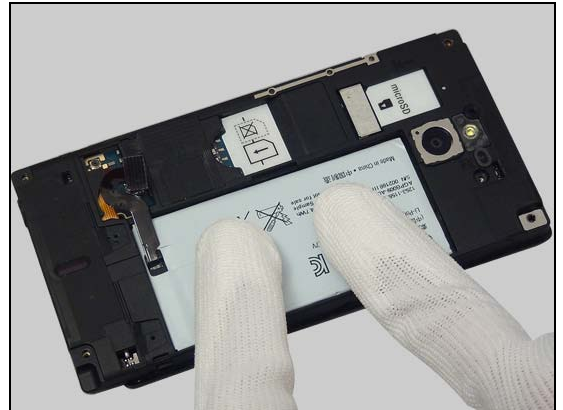
The Battery should be assembled after the Inner Frame to be able to use the Inner Frame as alignment.

Align a new Battery against the bottom and the right beam of the Inner Frame.



## Replacement: Battery

Press 7 seconds to secure the attachment and make the adhesive take full effect.



## Replacement

### 4.12 Cushion BtB Support

*Follow the 3.1 – 3.6 Disassembly instructions.*

*Carry out the Removal as described below.*

*Prepare the new Cushion BtB Support.*

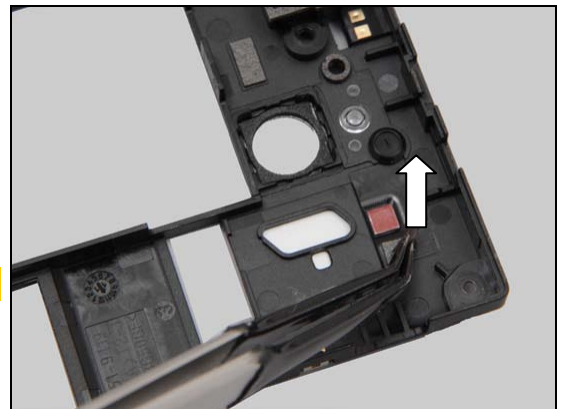
*Carry out the Installation as described below.*

*Follow the 5.3 – 5.8 Reassembly instructions.*

#### REMOVAL

Remove the Cushion BtB Support with a Flex Film Assembly Tool.

**Scrap! Not to be reused!**

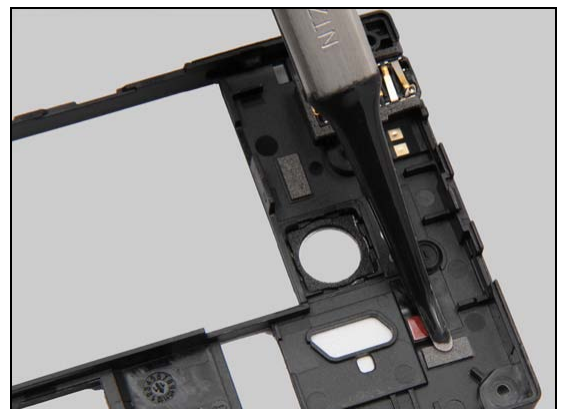


#### INSTALLATION

Mount a new Cushion BtB Support.



Press to secure its attachment.



## Replacement

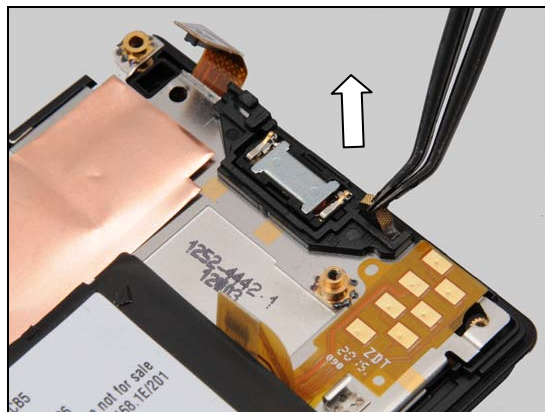
### 4.13 Cushion Conductive Grounding

Follow the 3.1 – 3.7 Disassembly instructions.  
 Carry out the Removal as described below.  
 Prepare the new Cushion Conductive Grounding.  
 Carry out the Installation as described below.  
 Follow the 5.2 – 5.8 Reassembly instructions.

#### REMOVAL

Remove the Cushion Conductive Grounding with a Flex Film Assembly Tool.

**Scrap! Not to be reused!**

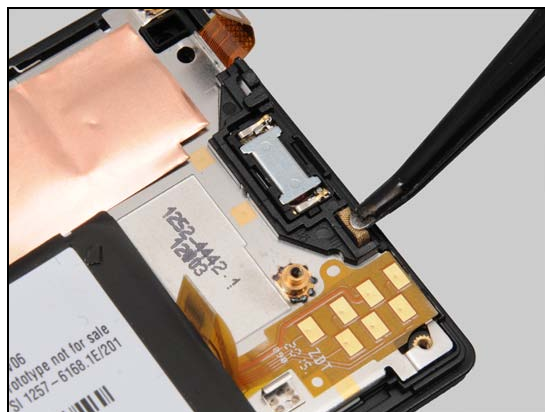


#### INSTALLATION

Mount a new Cushion Conductive Grounding.



Press to secure its attachment.



## Replacement

### 4.14 Display

*Follow the 3.1 – 3.8 Disassembly instructions.*

*Follow the 4.33 Removal instructions.*

*Carry out the Removal as described below.*

*Prepare the new Display.*

*Carry out the Installation as described below.*

*Follow the 4.33 Installation instructions.*

*Follow the 5.1 – 5.8 Reassembly instructions.*

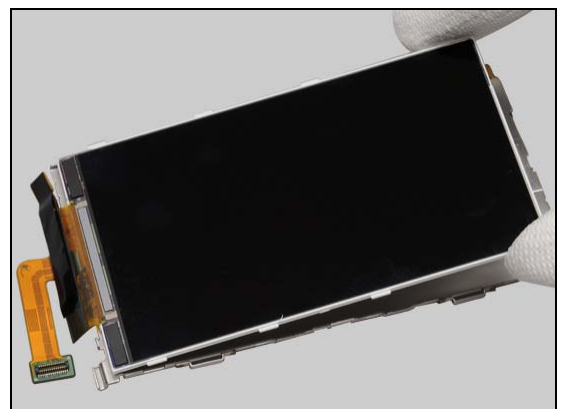
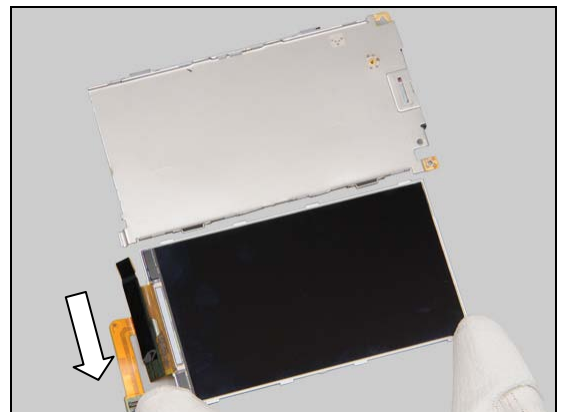
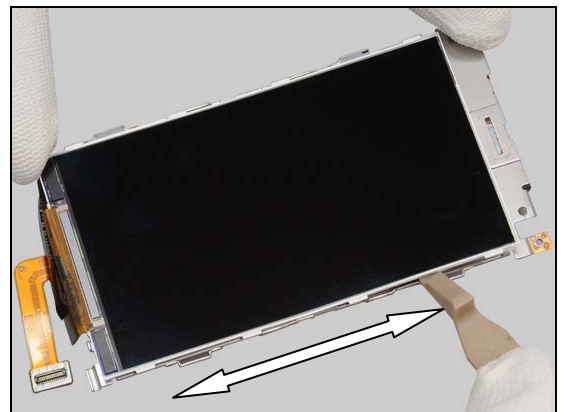
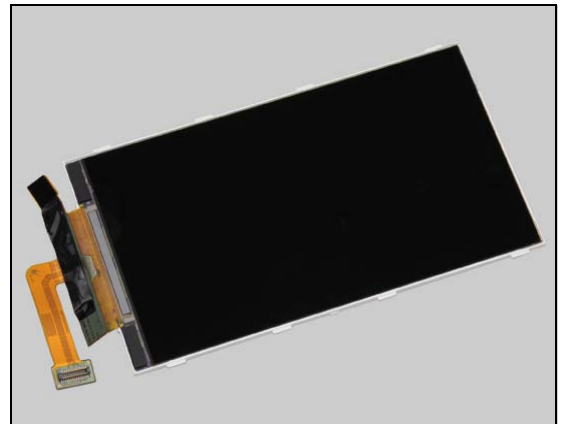
#### REMOVAL

Slide along right side to release the hooks with a Front Opening Tool.

Remove the Display.

#### INSTALLATION

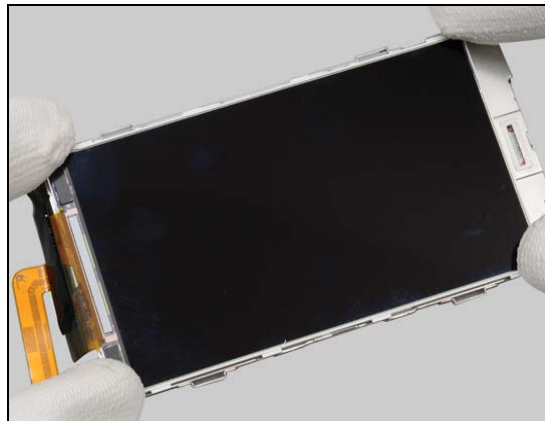
Place the Display in the LCD support.



## Replacement: Display

Press to secure its position.

***Do not touch the display.***



## Replacement

### 4.15 Earspeaker & Adhesive 11,9 x 5,9 Earspeaker

*Follow the 3.1 – 3.7 Disassembly instructions.*

*Carry out the Removal as described below.*

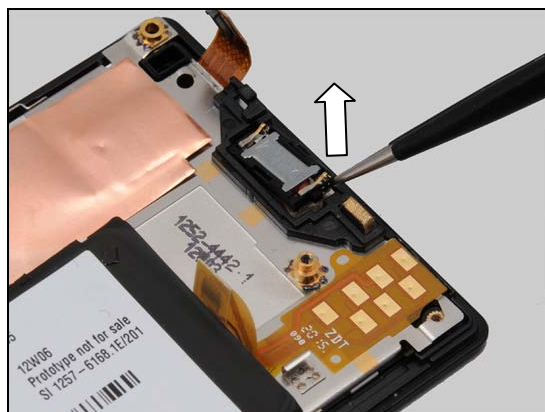
Prepare the new Earspeaker and the new Adhesive 11,9 x 5,9 Earspeaker.

*Carry out the Installation as described below.*

*Follow the 5.2 – 5.8 Reassembly instructions.*

#### REMOVAL

Remove the Earspeaker with a pair of tweezers.

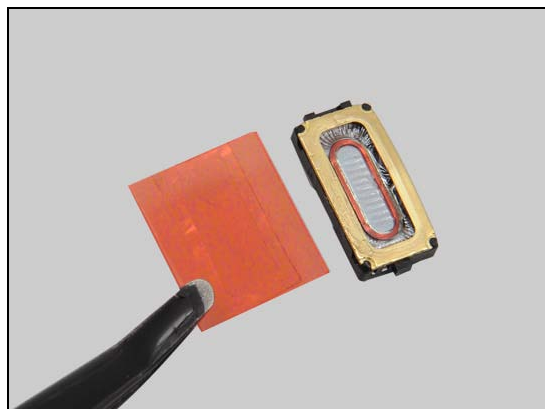


Remove all remains of the old adhesive on the LCD support.



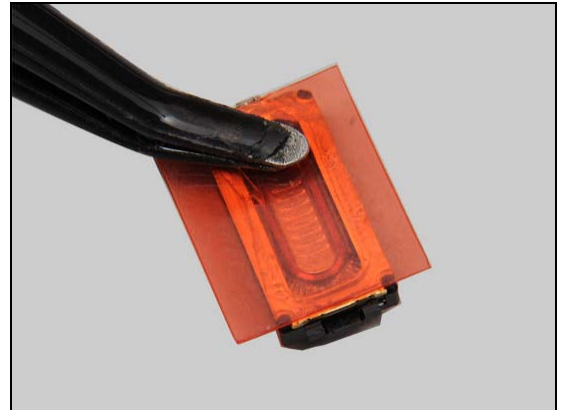
#### INSTALLATION

Prepare a new Earspeaker and a new Adhesive 11,9 x 5,9 Earspeaker.

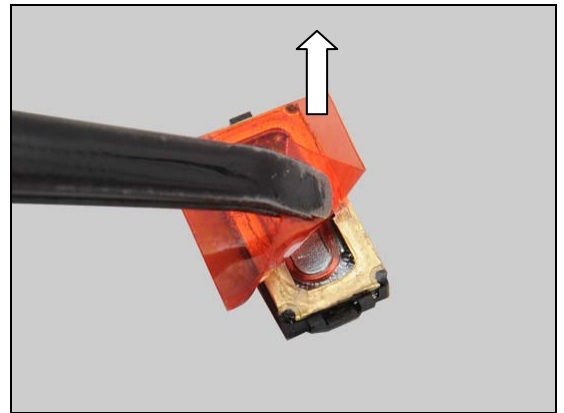


## Replacement: Earspeaker & Adhesive 11,9 x 5,9 Earspeaker

Align the Adhesive 11,9 x 5,9 Earspeaker with the inner metal edge by all four sides.  
Press to secure its attachment.

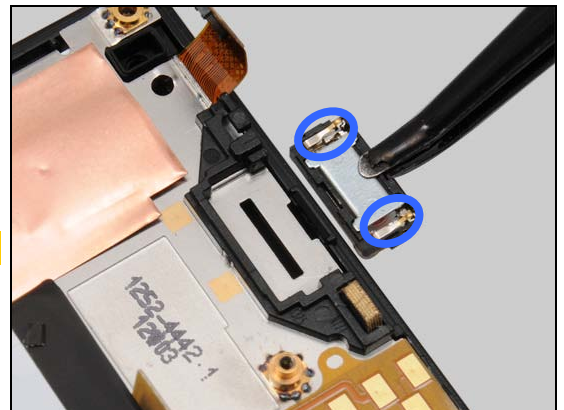


Peel off the protection tape.



Mount the new Earspeaker with Adhesive 11,9 x 5,9 Earspeaker.

**Note the correct direction of Earspeaker.**



Press to secure its attachment without damaging the pins.



## Replacement

### 4.16 Foil Battery Protection

*Follow the 3.1 – 3.3 Disassembly instructions.*

*Carry out the Removal as described below.*

*Prepare the new Foil Battery Protection.*

*Carry out the Installation as described below.*

*Follow the 5.6 – 5.8 Reassembly instructions.*

#### REMOVAL

Detach the Foil Battery Protection with a Guitar Pick from the upper right corner and slide downwards.

**Be careful not to damage the Battery.**



Peel off the Foil Battery Protection with your fingers.

**Note: Be careful with the flex film of the Battery when the foil is removed.**



#### INSTALLATION

Mount a new Foil Battery Protection. The Foil Battery Protection should be aligned to the bottom left side of the battery cavity.



## Replacement: Foil Battery Protection

Press all over the Foil Battery Protection to secure its attachment without wrinkles.



Read the old Label Mobile Phone and write the information into the 'Label Print Solution' program.

Check that the proper label format is loaded in the Zebra printer and print a new label by using the 'Label Print Solution' software.

Press along the surface of the new Label Mobile Phone to secure the new label's attachment.



## Replacement

### 4.17 FPC AV

*Follow the 3.1 – 3.7 Disassembly instructions.*

*Carry out the Removal as described below.*

*Prepare the new FPC AV.*

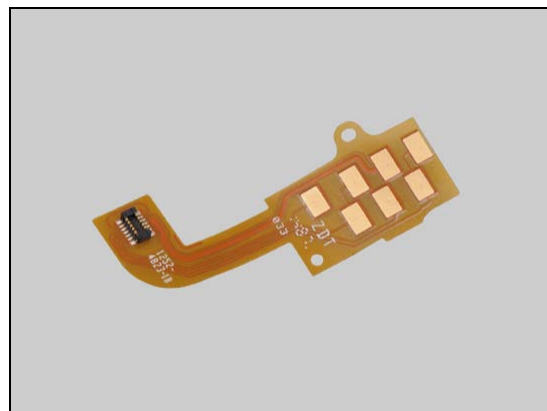
*Carry out the Installation as described below.*

*Follow the 5.2 – 5.8 Reassembly instructions.*

#### REMOVAL

Peel off the FPC AV.

**Scrap! Not to be reused!**



Remove all remains of the old adhesive on the LCD support.



#### INSTALLATION

The FPC AV should be aligned with the edges of the LCD support.



## Replacement: FPC AV

Press to secure its attachment.



## Replacement

### 4.18 FPC LED/Vibr/Speaker

*Follow the 3.1 – 3.8 Disassembly instructions.*

*Follow the 4.23 Removal instructions.*

*Carry out the Removal as described below.*

*Prepare the new FPC LED/Vibr/Speaker.*

*Carry out the Installation as described below.*

*Follow the 4.23 Installation instructions.*

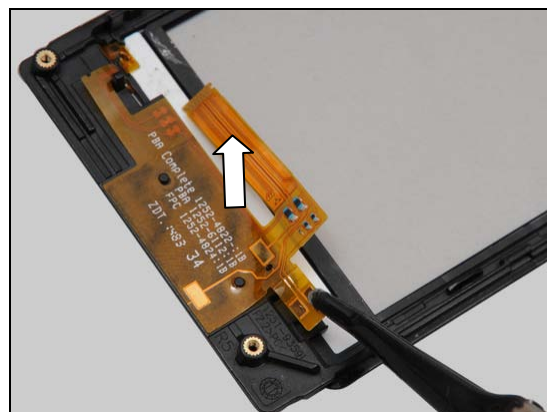
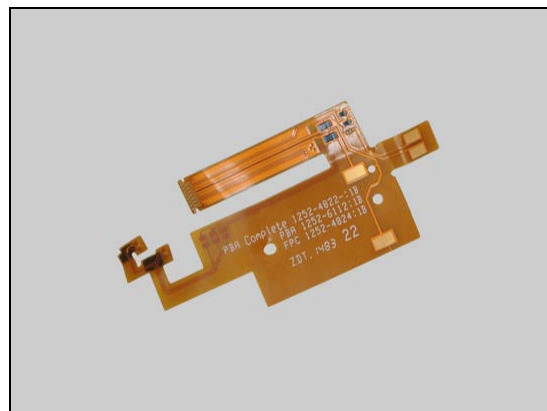
*Follow the 5.1 – 5.8 Reassembly instructions.*

#### REMOVAL

Peel off the FPC LED/Vibr/Speaker from right tail.

Remove all remains of the old adhesive on the Cover Front.

**Scrap! Not to be reused!**



#### INSTALLATION

Mount a new FPC AV. Note the guiding hole on FPC LED/Vibr/Speaker and Cover Front.

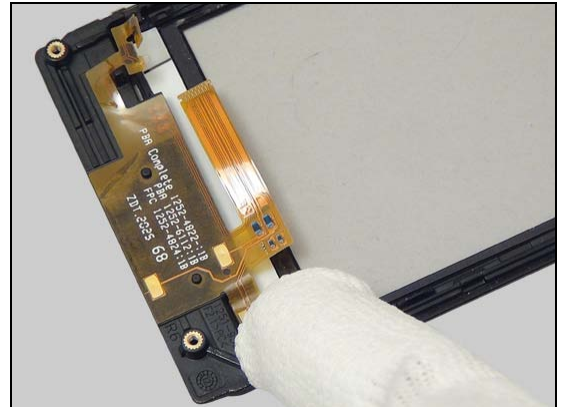


Press the flex film to secure its attachment.

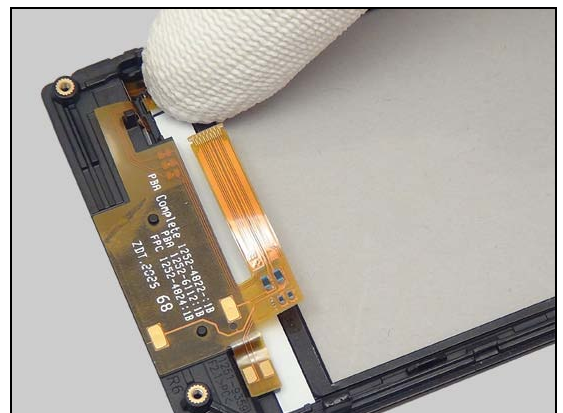


## Replacement: FPC LED/Vibr/Speaker

Bend the flex film by the vibrator and attach it to the Cover Front. Press to secure its attachment.



Bend the flex film by the touch and light guide LEDs and attach it to the Cover Front. Press to secure its attachment.



## Replacement

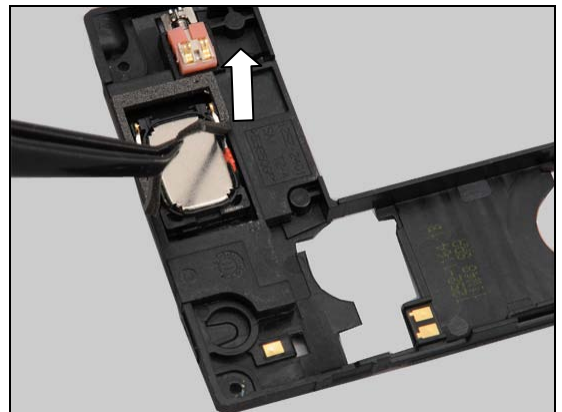
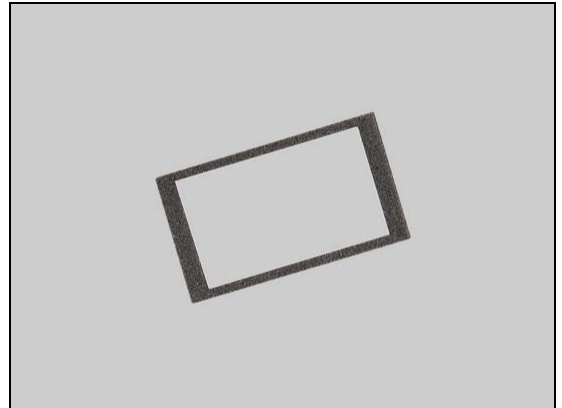
### 4.19 Gasket 23 x 13 Speakerbox

*Follow the 3.1 – 3.6 Disassembly instructions.  
Carry out the Removal as described below.  
Prepare the new Gasket 23 x 13 Speakerbox.  
Carry out the Installation as described below.  
Follow the 5.3 – 5.8 Reassembly instructions.*

#### REMOVAL

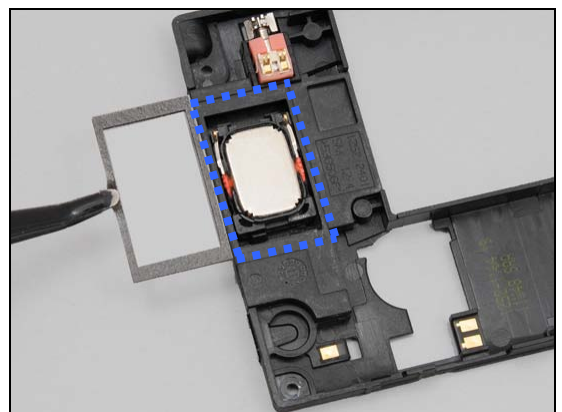
Remove the Gasket 23 x 13 Speakerbox.

**Scrap! Not to be reused!**

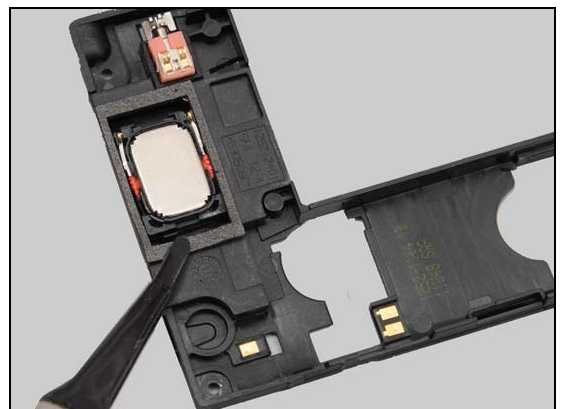


#### INSTALLATION

Mount a new Gasket 23 x 13 Speakerbox.



Press to secure its attachment.



## Replacement

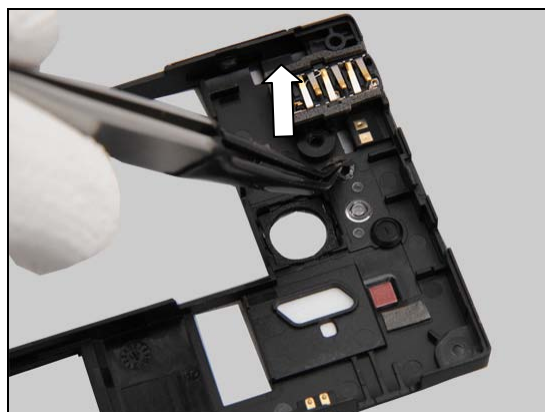
### 4.20 Gasket 2nd Mic Circular

*Follow the 3.1 – 3.6 Disassembly instructions.  
Carry out the Removal as described below.  
Prepare the new Gasket 2nd Mic Circular.  
Carry out the Installation as described below.  
Follow the 5.3 – 5.8 Reassembly instructions.*

#### REMOVAL

Remove the Gasket 2nd Mic Circular.

**Scrap! Not to be reused!**



#### INSTALLATION

Mount a new Gasket 2nd Mic Circular.



Press to secure its attachment.



## Replacement

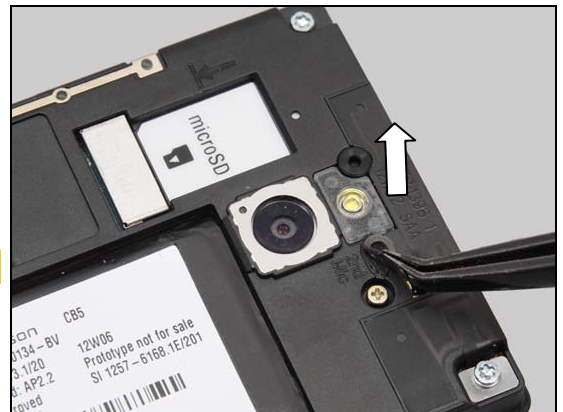
### 4.21 Gasket 2nd Mic Oval

Follow the 3.1 – 3.3 Disassembly instructions.  
Carry out the Removal as described below.  
Prepare the new Gasket 2nd Mic Oval.  
Carry out the Installation as described below.  
Follow the 5.6 – 5.8 Reassembly instructions.

#### REMOVAL

Remove the Gasket 2nd Mic Oval.

**Scrap! Not to be reused!**



#### INSTALLATION

Mount a new Gasket 2nd Mic Oval.



Press to secure its attachment.



## Replacement

### 4.22 Gasket Conductive

*Follow the 3.1 – 3.7 Disassembly instructions.*

*Carry out the Removal as described below.*

*Prepare the new Gasket Conductive.*

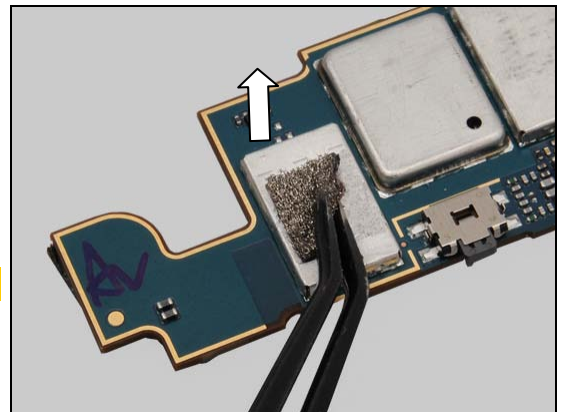
*Carry out the Installation as described below.*

*Follow the 5.2 – 5.8 Reassembly instructions.*

#### REMOVAL

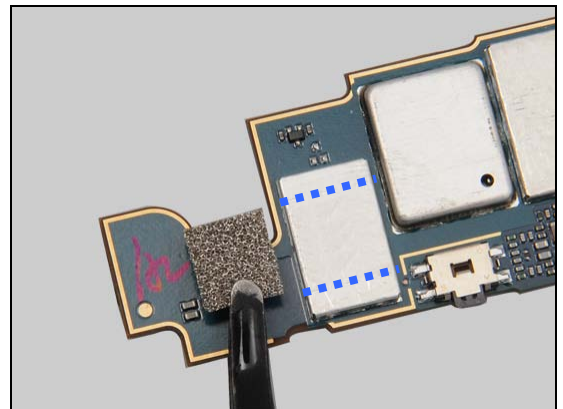
Detach the Gasket Conductive with a Flex Film Assembly Tool. Remove all remains of the old gasket on shield can.

**Scrap! Not to be reused!**

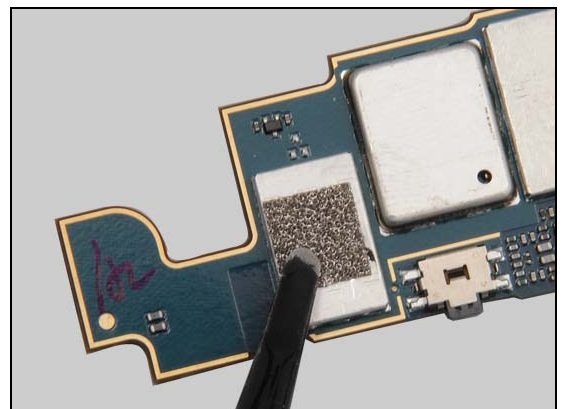


#### INSTALLATION

Mount a new Gasket Conductive in the center of the shield can lid.



Press to secure its attachment.



## Replacement

### 4.23 Gasket Lightguide LED

*Follow the 3.1 – 3.8 Disassembly instructions.*

*Carry out the Removal as described below.*

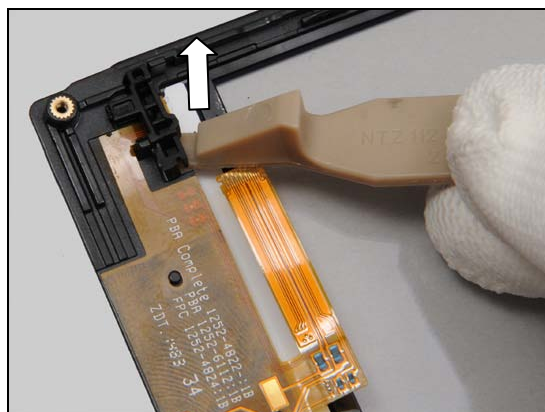
*Prepare the new Gasket Lightguide LED.*

*Carry out the Installation as described below.*

*Follow the 5.1 – 5.8 Reassembly instructions.*

#### REMOVAL

Release Gasket Lightguide LED with a Front Opening Tool and remove it.

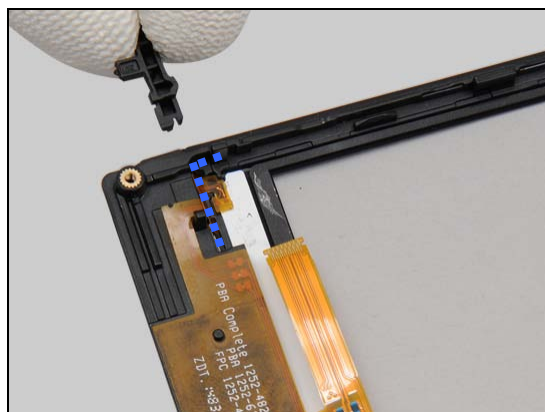


#### INSTALLATION

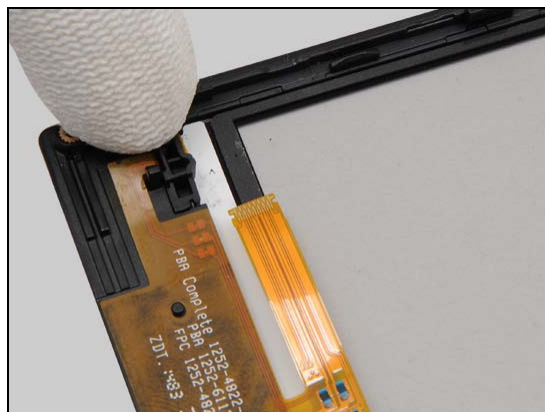
Bend and secure the position of the flex film.

Assembly a new Gasket Lightguide LED.

The Gasket Lightguide LED should keep the FPC LED/Vibr/Speaker in the correct position.



Press to secure its position.



## Replacement

### 4.24 Gasket Main Mic Rectangular

Follow the 3.1 – 3.4 Disassembly instructions.  
 Carry out the Removal as described below.  
 Prepare the new Gasket Main Mic Rectangular.  
 Carry out the Installation as described below.  
 Follow the 5.5 – 5.8 Reassembly instructions.

#### REMOVAL

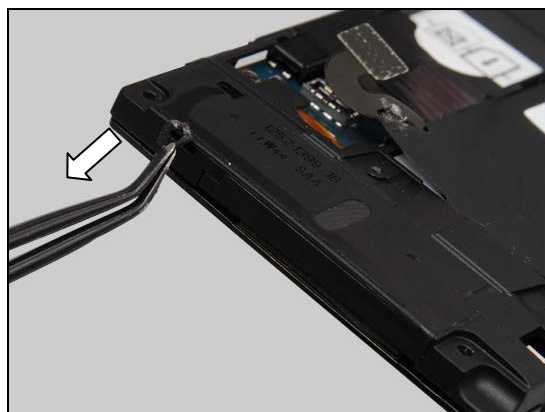
Remove the Gasket Main Mic Rectangular.

**Scrap! Not to be reused!**

#### INSTALLATION

Mount a new Gasket Main Mic Rectangular aligned with the guiding rib on Inner Frame.

Press to secure its attachment.



## Replacement

### 4.25 Gasket Mic Circular

*Follow the 3.1 – 3.6 Disassembly instructions.*

*Carry out the Removal as described below.*

*Prepare the new Gasket Mic Circular.*

*Carry out the Installation as described below.*

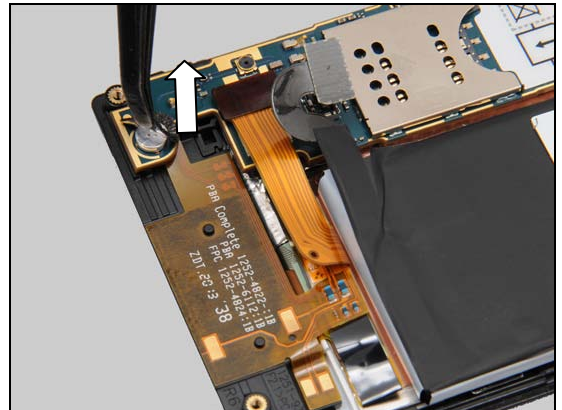
*Follow the 5.3 – 5.8 Reassembly instructions.*



#### REMOVAL

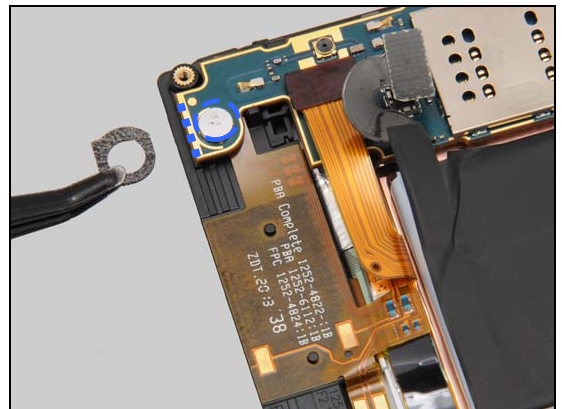
Remove the Gasket Mic Circular.

**Scrap! Not to be reused!**

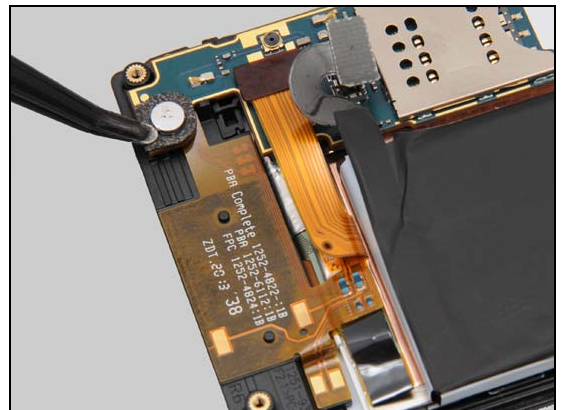


#### INSTALLATION

Mount a new Gasket Mic Circular.



Press to secure its attachment.



## Replacement

### 4.26 Label MicroSD

*Follow the 3.1 – 3.3 Disassembly instructions.*

*Carry out the Removal as described below.*

*Prepare the new Label MicroSD.*

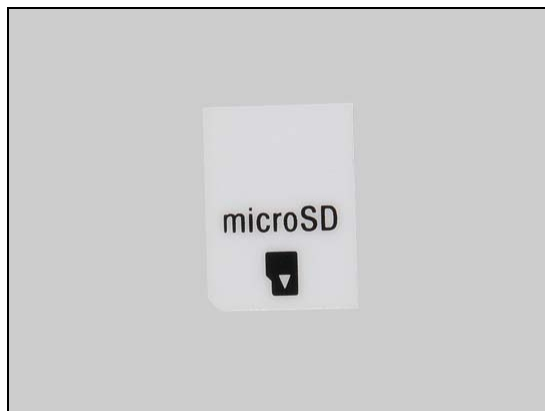
*Carry out the Installation as described below.*

*Follow the 5.6 – 5.8 Reassembly instructions.*

#### REMOVAL

Remove the Label MicroSD.

**Scrap! Not to be reused!**



#### INSTALLATION

Mount a new Label MicroSD in the well.



Press to secure its attachment.



## Replacement

### 4.27 Label Mobile Phone

*Follow the 3.1 – 3.3 Disassembly instructions.*

*Carry out the Removal as described below.*

*Prepare the new Label Mobile Phone.*

*Carry out the Installation as described below.*

*Follow the 5.6 – 5.8 Reassembly instructions.*

#### REMOVAL

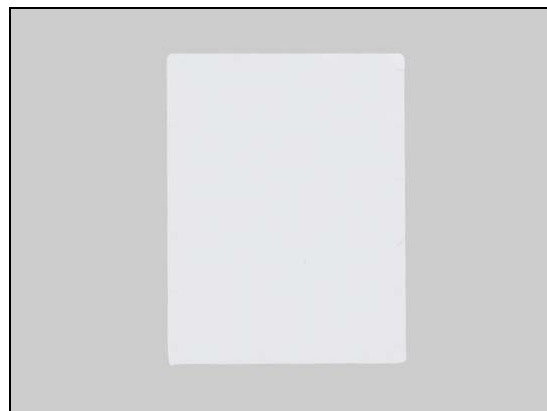
Read the old Label Mobile Phone and write the information into the 'Label Print Solution' program before removal.

Detach the Foil Battery Protection with a Guitar Pick from the upper right corner and slide downwards.

**Be careful not to damage the Battery.**

Peel off Foil Battery Protection with your fingers.

**Note: The Foil Battery Protection should always be disposed together with Label Mobile Phone.**



## Replacement: Label Mobile Phone

### INSTALLATION

Check that the proper label format is loaded in the Zebra printer and print a new label by using the 'Label Print Solution' software.

**One label only is allowed!**

Mount a new Foil Battery Protection. The Foil Battery Protection should be aligned to the bottom left side of the battery cavity.

Press all over the Foil Battery Protection to secure its attachment without wrinkles.

Press along the surface of the new Label Mobile Phone to secure the new label's attachment.



## Replacement

### 4.28 Label SIM

Follow the 3.1 – 3.3 Disassembly instructions.  
 Carry out the Removal as described below.  
 Prepare the new Label SIM.  
 Carry out the Installation as described below.  
 Follow the 5.6 – 5.8 Reassembly instructions.

#### REMOVAL

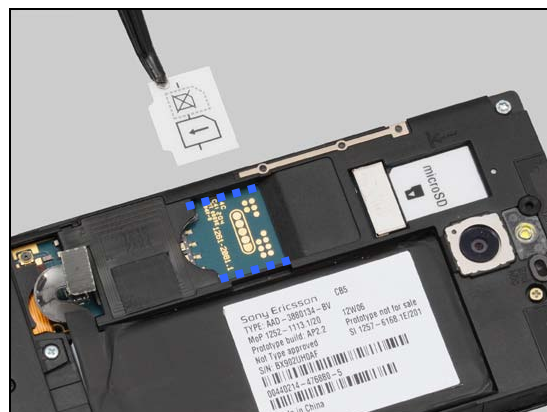
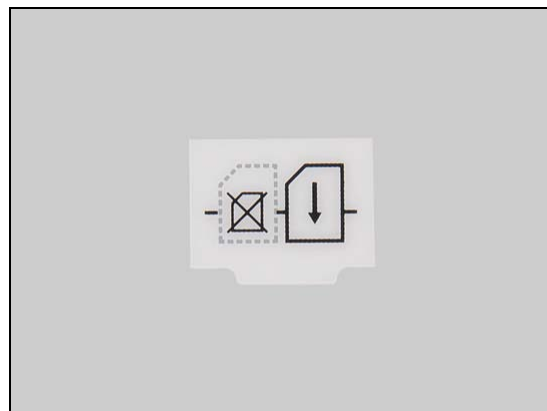
Remove the Label SIM.

**Scrap! Not to be reused!**

#### INSTALLATION

Mount a new Label SIM in the well.

Press to secure its attachment.



## Replacement

### 4.29 Main Camera

*Follow the 3.1 – 3.7 Disassembly instructions.*

*Carry out the Removal as described below.*

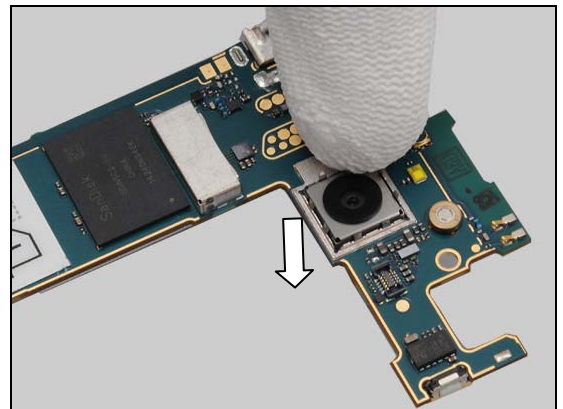
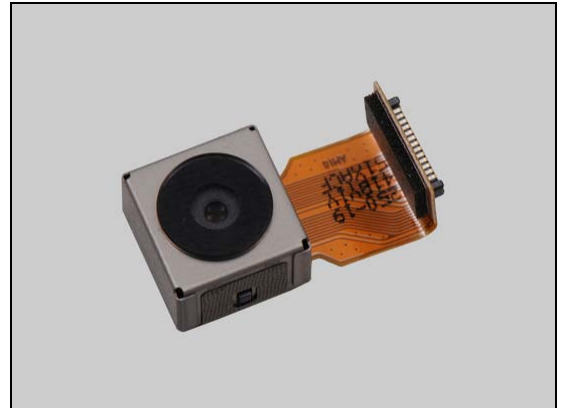
*Prepare the new Main Camera.*

*Carry out the Installation as described below.*

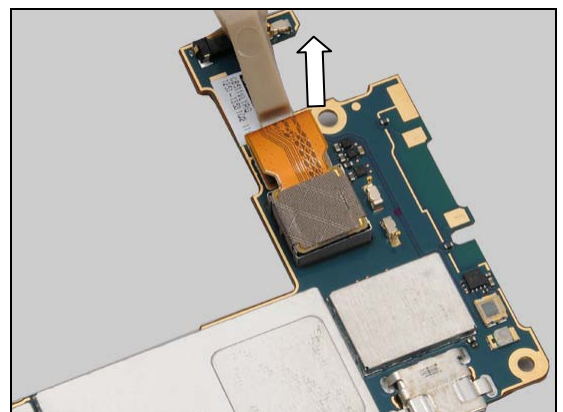
*Follow the 5.2 – 5.8 Reassembly instructions.*

#### REMOVAL

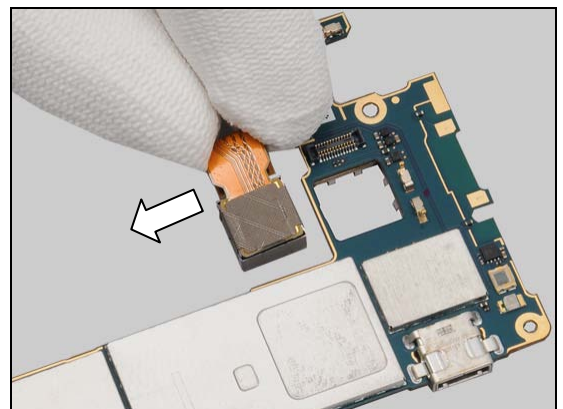
Push the Main Camera from the opposite site to release it from the cavity.



Turn over the Main PBA and unsnap the BtB connector.



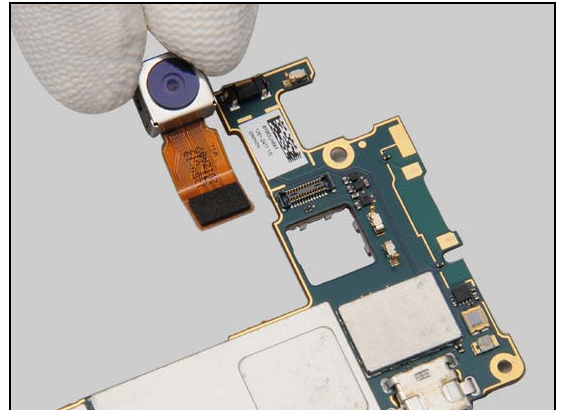
Remove the Main Camera.



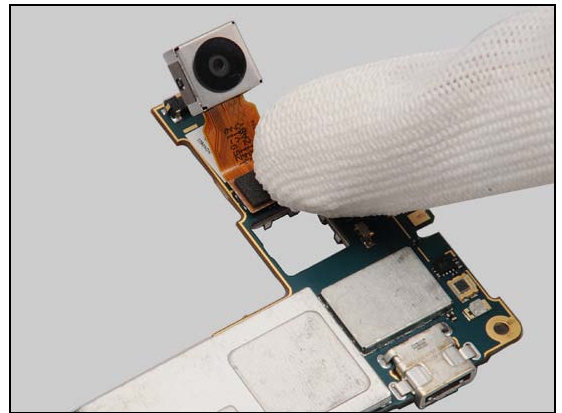
## Replacement: Main Camera

### INSTALLATION

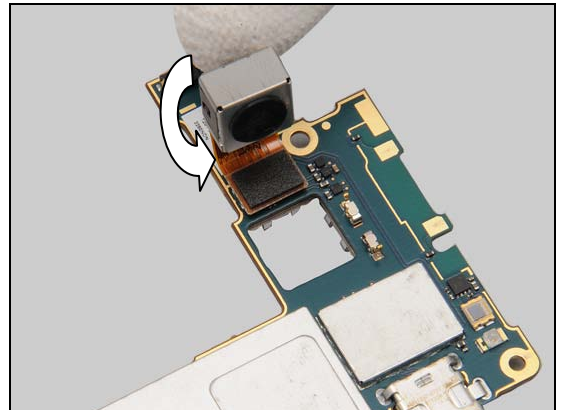
Place the new Main Camera in the correct position.



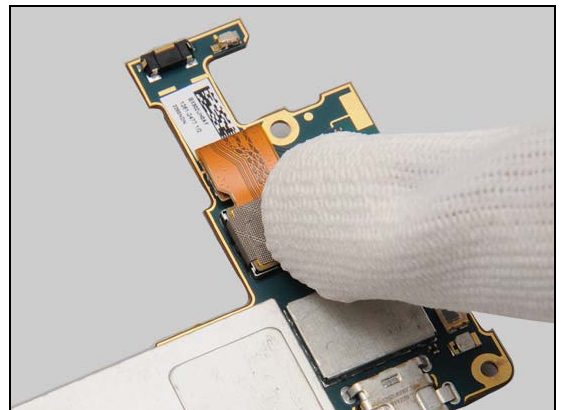
Snap the BtB connector.



Turn the Main Camera into the cavity.



Press it into the cavity gently.



## Replacement

### 4.30 Plug RF Connector

*Follow the 3.1 – 3.3 Disassembly instructions.*

*Carry out the Removal as described below.*

*Prepare the new Plug RF Connector.*

*Carry out the Installation as described below.*

*Follow the 5.6 – 5.8 Reassembly instructions.*

#### REMOVAL

Release the Plug RF Connector with a pair of tweezers and remove it.



#### INSTALLATION

Mount a new Plug RF Connector.



Press to secure its position.



## Replacement

### 4.31 Silicone On/Off

Follow the 3.1 – 3.3 Disassembly instructions.

Carry out the Removal as described below.

Prepare the new Silicone On/Off.

Carry out the Installation as described below.

Follow the 5.6 – 5.8 Reassembly instructions.

#### REMOVAL

Remove the Silicone On/Off.

**Scrap! Not to be reused!**

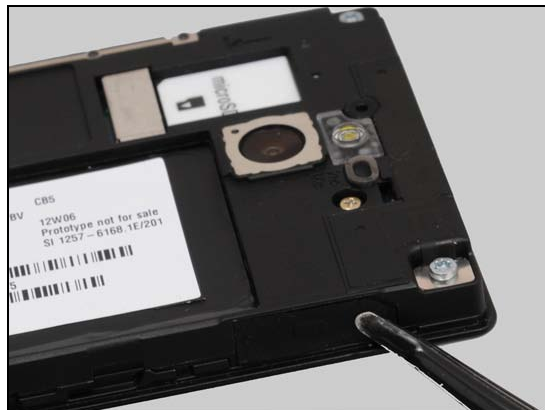


#### INSTALLATION

Mount a new Silicone On/Off in the dipping. Note the cropped corner.



Press to secure its attachment.



## Replacement

### 4.32 Speaker & Adhesive 14,6 x 10,6 Loudspeaker

*Follow the 3.1 – 3.6 Disassembly instructions.*

*Carry out the Removal as described below.*

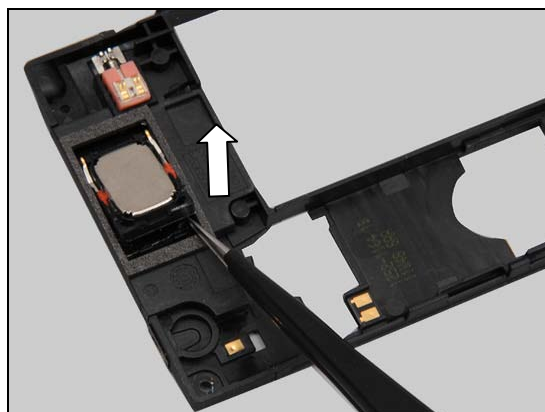
Prepare the new Speaker and the new Adhesive 14,6 x 10,6 Loudspeaker.

*Carry out the Installation as described below.*

*Follow the 5.3 – 5.8 Reassembly instructions.*

#### REMOVAL

Remove the Speaker with a pair of tweezers.



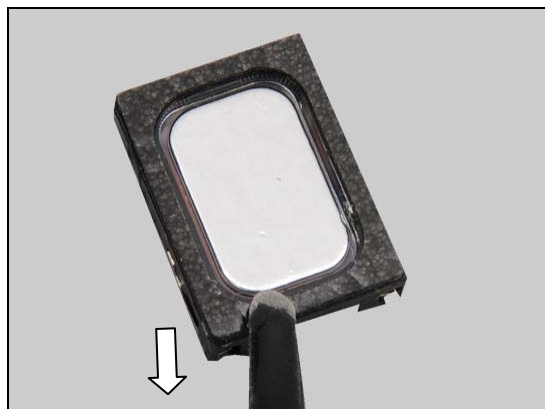
#### INSTALLATION

Place a new Adhesive 14,6 x 10,6 Loudspeaker in proper position of the back side of Speaker.

Align the Adhesive 14,6 x 10,6 Loudspeaker with the inner metal edge by all four sides.



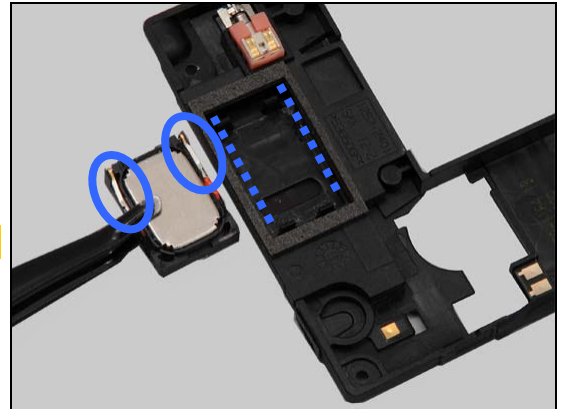
Press to secure its attachment.



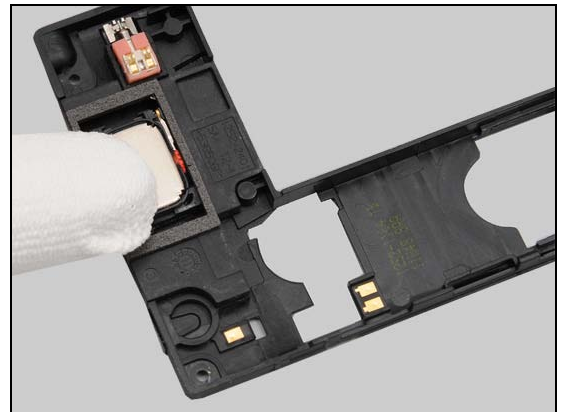
## Replacement: Speaker & Adhesive 14,6 x 10,6 Loudspeaker

Place the Speaker with the new Adhesive 14,6 x 10,6 Loudspeaker in the well.

**Note the direction of the two speaker pins.**



Press to secure its attachment without damaging the pins.



## Replacement

### 4.33 Tape Conductive

*Follow the 3.1 – 3.8 Disassembly instructions.*

*Carry out the Removal as described below.*

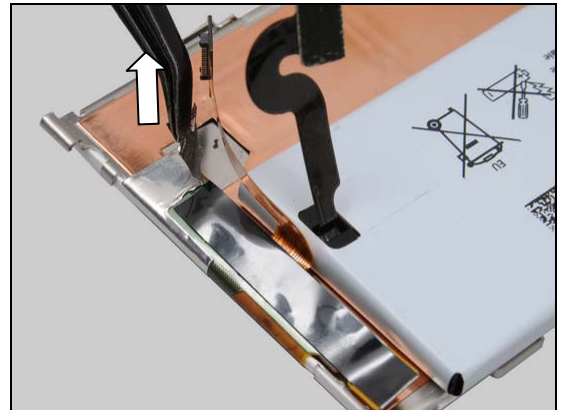
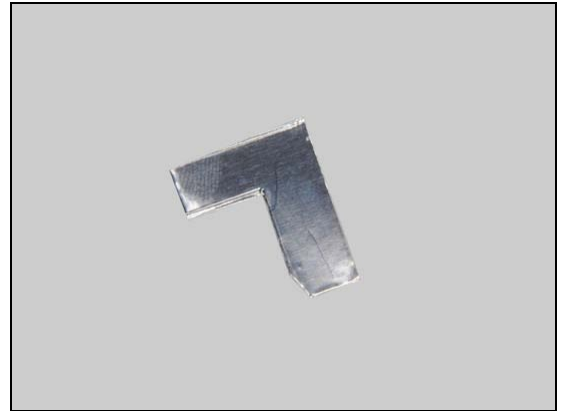
*Prepare the new Tape Conductive.*

*Carry out the Installation as described below.*

*Follow the 5.1 – 5.8 Reassembly instructions.*

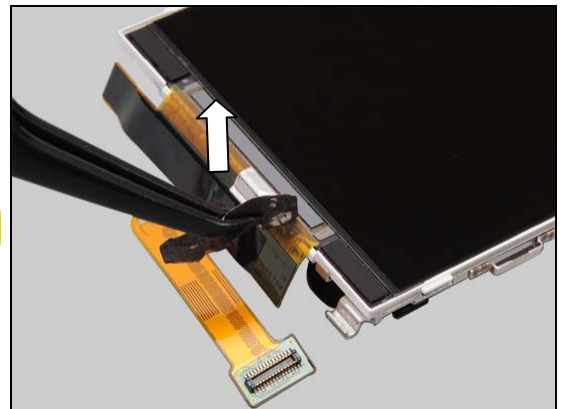
#### REMOVAL

Detach the Tape Conductive from back side of Display.



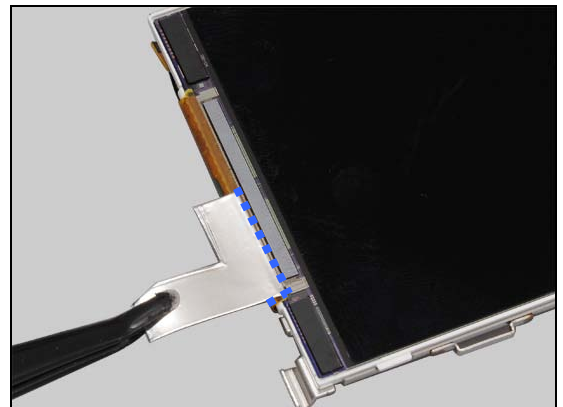
Remove the Tape Conductive from front side of Display.

**Scrap! Not to be reused!**



#### INSTALLATION

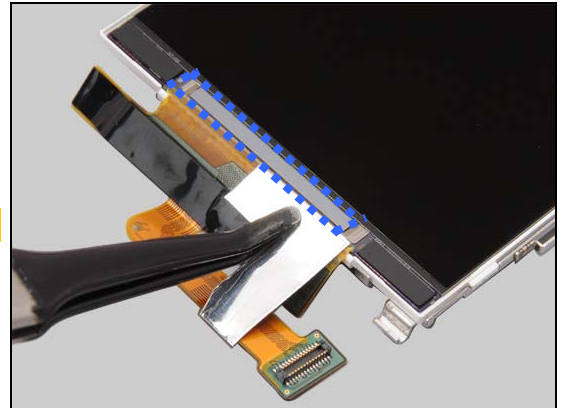
Mount a new Tape Conductive aligned with the LCD driver.



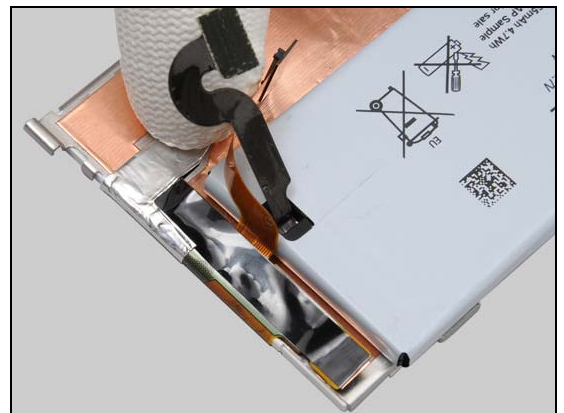
## Replacement

Press to secure its attachment.

**Note: Do not press on the LCD driver, marked in blue.**



Turn around and press on the back side to secure its attachment.



## Replacement

### 4.34 Vibrator

*Follow the 3.1 – 3.6 Disassembly instructions.*

*Carry out the Removal as described below.*

*Prepare the Vibrator.*

*Carry out the Installation as described below.*

*Follow the 5.3 – 5.8 Reassembly instructions.*

#### REMOVAL

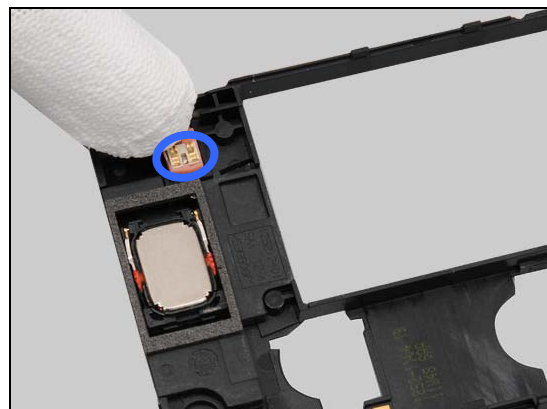
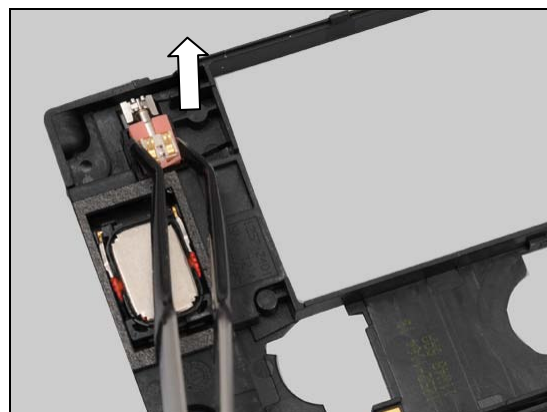
Remove the Vibrator with a Flex Film Assembly Tool.

#### INSTALLATION

Place a new Vibrator in the well.

Press to secure its position.

Do not press on the pins of the Vibrator.



## Replacement

### 4.35 Water Indicator 3 x 3

#### INSPECTION

Check whether the Water Indicator 3x3 has been activated (reddish color).

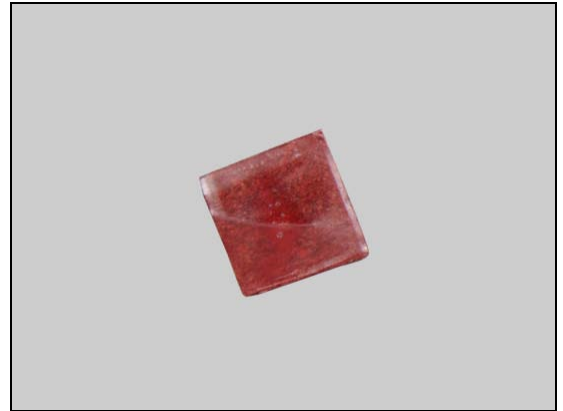
*Follow the 3.1 – 3.6 Disassembly instructions.*

*Carry out the Removal as described below.*

Prepare the new Water Indicator 3 x 3.

*Carry out the Installation as described below.*

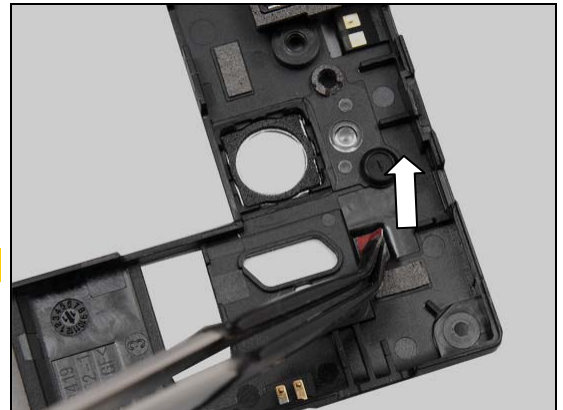
*Follow the 5.3 – 5.8 Reassembly instructions.*



#### REMOVAL

Remove the Water Indicator 3 x 3.

**Scrap! Not to be reused!**



#### INSTALLATION

Mount a new Water Indicator 3 x 3.



Press to secure its attachment.



## Replacement

### 4.36 Board Swap - Replacement

*Follow the 3.1 – 3.7 Disassembly instructions.*

*Follow the 4.29 Removal instructions.*

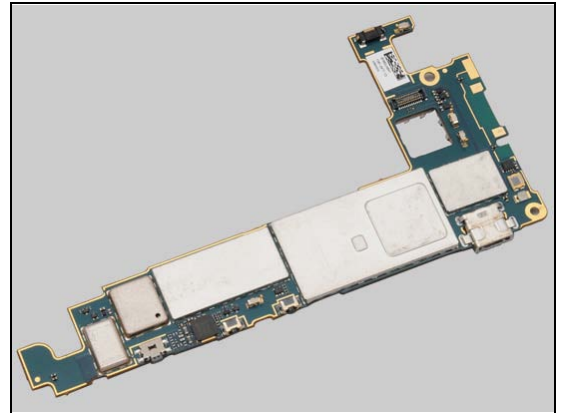
Replace the Swap Board.

Reuse the Main Camera.

*Follow the 4.22, 4.25, 4.28 and 4.29 Installation instructions.*

*Follow the 5.2 – 5.8 Reassembly instructions.*

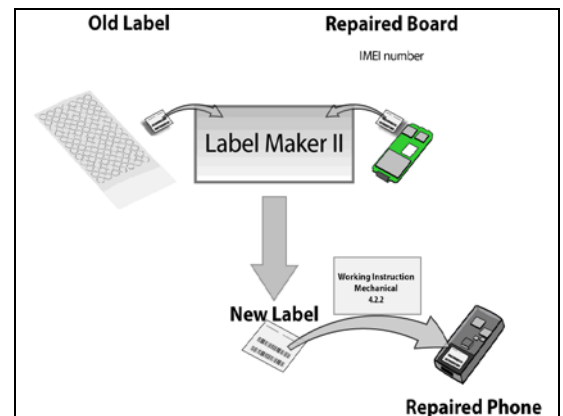
Startup the unit to initialize settings, before performing Customize Phone in Emma



### 4.37 Board Swap – Change Label

#### CHANGE LABEL

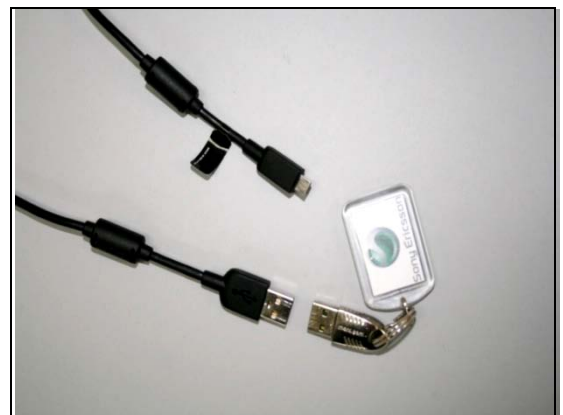
*Follow the instructions in the Generic Repair Manual – Build swap for change of label.*



### 4.38 Board Swap – Customize of Software

#### CUSTOMIZE OF SOFTWARE

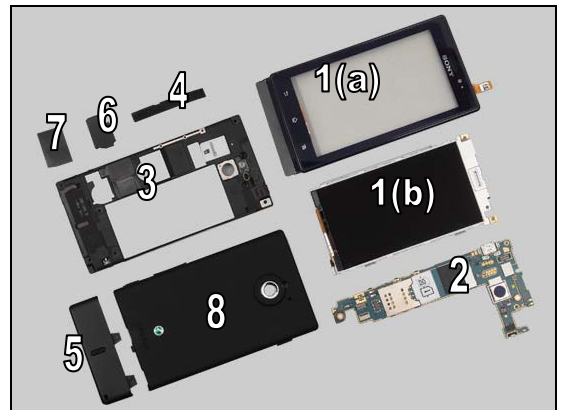
*Follow the instructions in the Generic Repair Manual – Build swap for customization of the software.*



## 5 Reassembly

The reassembly is done in the following order:

1. Cover Front (a) & LCD Support Assembly (b)
2. Main PBA
3. Inner Frame
4. Silicone Volume/Camera
5. Cap Bottom
6. Lid Battery Flex
7. Foil Battery Flex Lid
8. Cover Battery



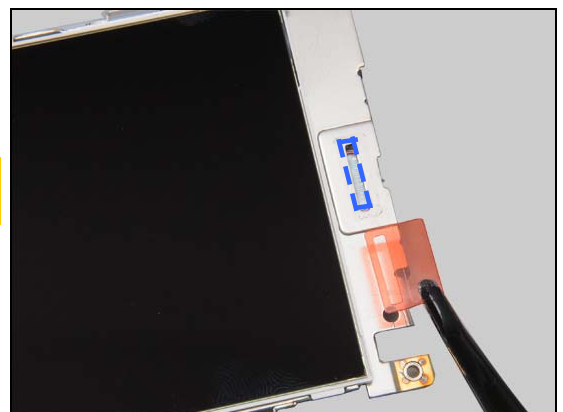
### 5.1 Cover Front & LCD support Assembly

Prepare the LCD support Assembly and Cover Front.

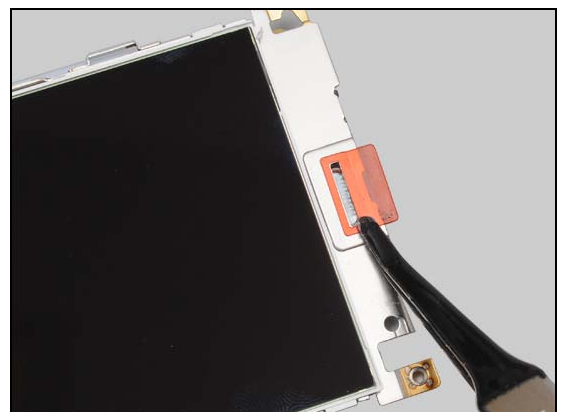


**Remove the old Adhesive 10,8 x 3,4 and remove all remains of the old adhesive on the LCD support.**

Mount a new Adhesive 10,8 x 3,4.

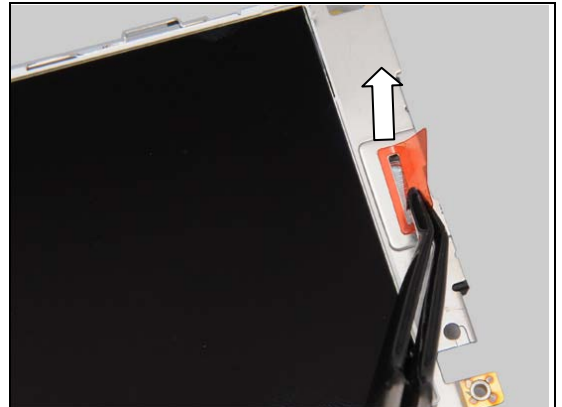


Press to secure its attachment.



## Reassembly

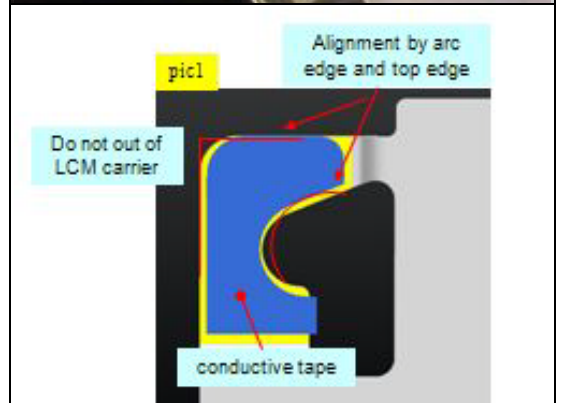
Peel off the protection tape.



**Remove the old Foil Adhesive Double Side Conductive and remove all remains of the old adhesive on the LCD support.**



Mount a new Foil Adhesive Double Side Conductive and align it along the outer edge and the inner arc edge.



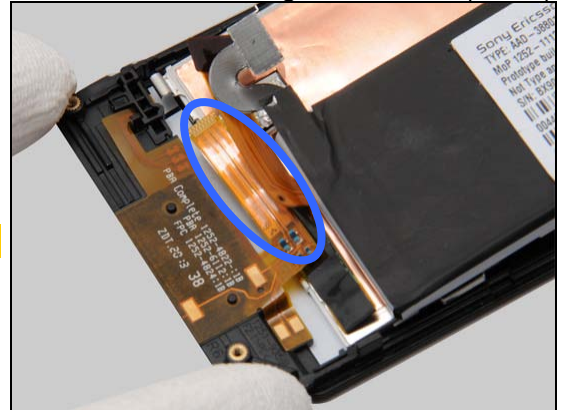
Press to secure its attachment and peel off the protection tape.



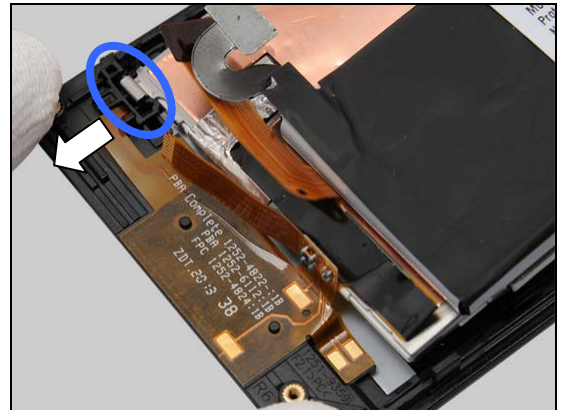
## Working Instructions (mech)

Place the LCD support Assembly into Cover Front from bottom side.

**Secure that the FPC LED/Vibr/Speaker is outside.**



Place the hook of LCD support into the Gasket Lightguide LED to secure its position.



Press the LCD support Assembly to secure its position.



## Reassembly

### 5.2 Main PBA

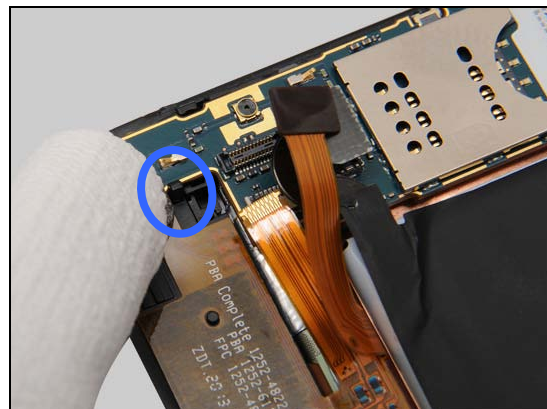
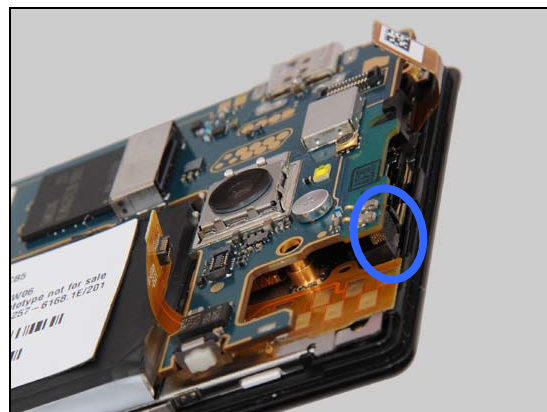
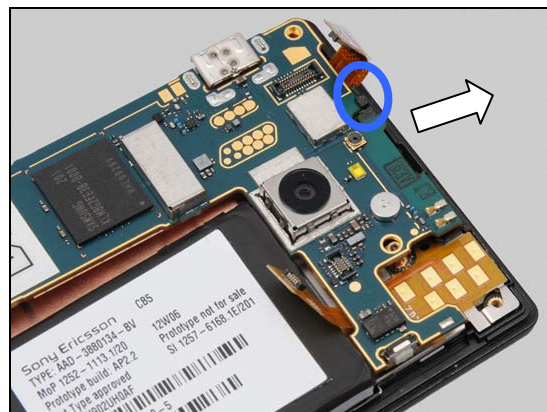
Place the Main PBA on Cover Front & LCD support assembly.

Start to insert the Main PBA into the hook in the top.

**Secure the position of the Cushion Conductive Grounding. It should be mounted as in the picture, not bend or crinkled.**

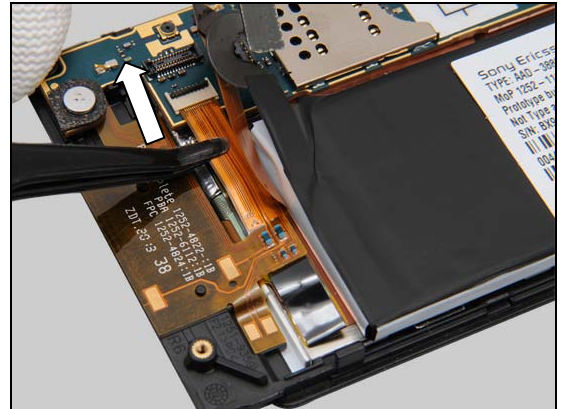
Press the Main PBA to snap the hook in the bottom.

**Secure that the FPC are outside.**

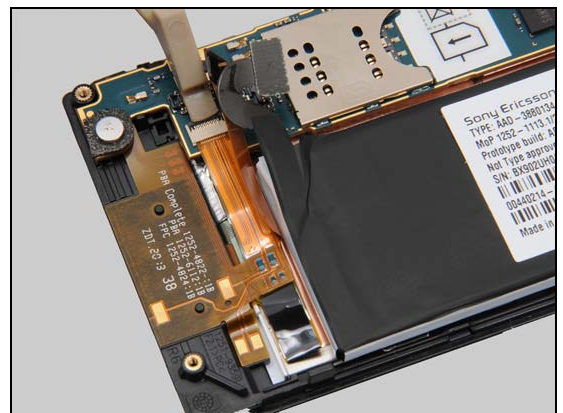


## Reassembly

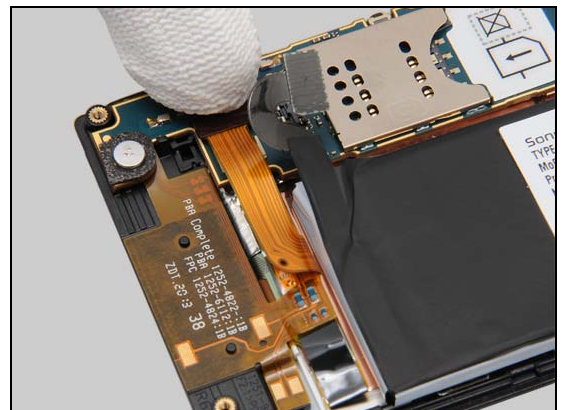
Insert the ZIF connector with a Flex Film Assembly Tool.



Lock the ZIF connector with a Front Opening Tool.



Snap the BtB connector of the Display.

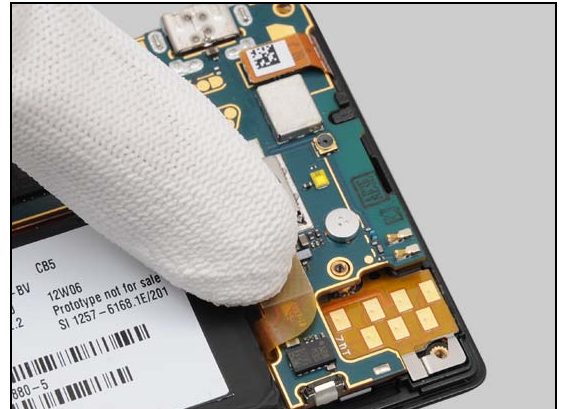


Snap the BtB connector of the Cover Front.



## Reassembly

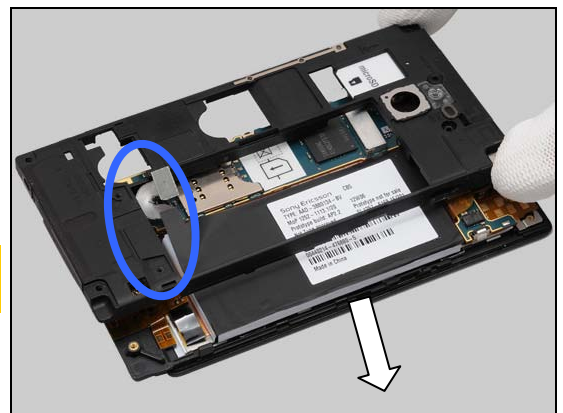
Snap the BtB connector of the FPC AV.



### 5.3 Inner Frame

Place the Inner Frame on the unit from left side.

**Secure that the BtB connector of Battery is outside the Inner Frame.**



Secure the position of the Camera before the Inner Frame is snapped into place. The Camera **shouldn't** be tilted as it is in this picture.



Press to secure its position.



## Reassembly

Apply  $15 \pm 1$  Ncm torque when tightening the three Screw M1.4x2.8 with Bits (T3).

**Take new screws!**



Apply  $15 \pm 1$  Ncm torque when tightening the two Screw Torx 5.0 x 1.4 with Bits (T6).

**Take new screws!**



## 5.4 Silicone Volume/Camera

Mount the new Silicone Volume/Camera.  
Align the gap on the Silicone Volume/Camera.

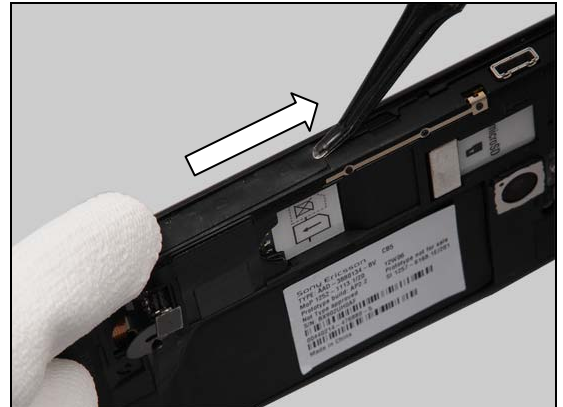


Mount a new Silicone On/Off in the dipping. Note the cropped corner. Press left side to secure its attachment.



## Reassembly

Press along right side of Silicone Volume/Camera.



Press right side to secure its attachment.



### 5.5 Cap Bottom

Mount the Cap Bottom.



Push upwards to secure its position.



## Reassembly

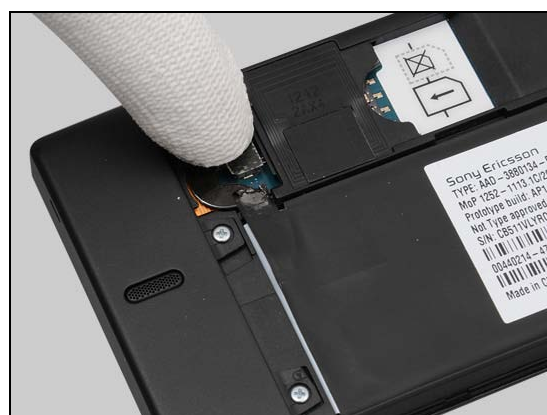
Apply  $11 \pm 1$  Ncm torque when tightening the two Screw JCIS#0 3.0 x 1.4 with Bits (JCIS No 0).

**Take new screws!**



### 5.6 Lid Battery Flex

Snap the BtB connector of Battery.



Insert Lid Battery Flex into the cavity from left side.



Press to secure its position.



## Reassembly

### 5.7 Foil Battery Flex Lid

Mount the new Foil Battery Flex Lid.

The Foil Battery Flex Lid should be aligned with edge of Inner Frame and the cap of the screw ears.

**Note! The Foil Battery Flex Lid should be mounted in every unit, even if the unit doesn't have the foil before.**

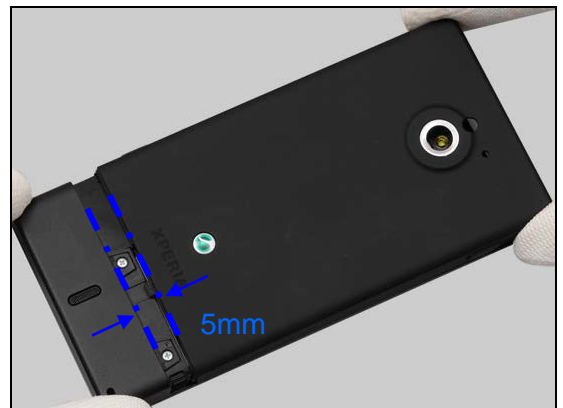


Press to secure its position and attachment.



### 5.8 Cover Battery

Place the Cover Battery 5mm from the Cap Bottom.



Press and ...



## Reassembly

... push downwards.



## 6 Revision History

Rev.	Date	Changes / Comments
1	2012-May-10	Initial release
2	2012-May-18	Added instruction for the Foil Battery Flex Lid
3	2012-May-30	General adjustments of the entire document.
4	2012-July-11	Board SWAP - Replacement updated.
5	2012-July-29	Mandatory Foil Adhesive Double Side Conductive replacement added under reassembly